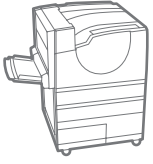


Phaser®  
7760  
Tabloid-size  
Color  
Laser Printer



# Xerox® Phaser® 7760 Color Laser Printer The designer's choice



# Phaser® 7760 Color Laser Printer

**High-quality, consistent color** is crucial when you rely on stunning visuals to convey your ideas and concepts. That's why the Xerox Phaser 7760 color printer is the designer's choice. It offers brilliant color, blazing speeds and easy-to-use features that make the most of everything you print.

## Quality color you can count on

The color you want is the color you get. This printer features technologies and software that allow you to specify and control the output color, so the results match your expectations. You get consistent color accuracy, sharp images, and crisp text, from the first page to the last.

- **Up to 1200 x 1200 dpi** resolution for fine line detail and crisp text.
- **600 x 600 x 4 dpi Photo Mode** for smooth color transitions, especially flesh tones.
- **Glossy, vivid colors** and rich, deep blacks.
- **Black Trapping** ensures that black text on colored backgrounds and colored text on black backgrounds prints sharp and clear.
- **TekColor correction** helps you simulate output colors of your computer screen, printing press or other device. Color can be managed automatically as well as manually for office graphics, press separations, monochrome graphics and spot colors via an industry-leading driver interface.
- **PhaserMatch® 4.0 color management** and calibration software adds another level of color control and helps maintain color accuracy.
- **Incredibly consistent output** through-out the length of the print run.

## Unbeatable performance

When it comes to printing important projects on time, you need both quality and speed. The Phaser 7760 printer is designed for high volume printing and offers impressive print speeds, efficient processing and other time saving features. You get the consistent quality you need, when you need it.

- **Printing speeds up to 35 ppm color** and 45 ppm black-and-white.
- **800 MHz Power PC processor** handles complex, graphic-intensive layout files with ease.
- **First-page-out time as fast as 9 seconds** for color.
- **Up to 1 GB of memory** minimizes print queues and keeps production moving.
- **Supports custom page sizes**, booklet and banner printing, and reliably prints on a wide range of media types and heavy paper weights for maximum project flexibility.

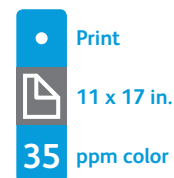
## Set up, manage and print with ease

Your busy office or graphics department needs a reliable printer that's easy to operate, requires minimal maintenance and won't slow you down. Simple setup and easy-to-use features of the Phaser 7760 save valuable time and free you up to focus on your work, not your printer.

- **Simple automated print driver** installation gets you printing in minutes.
- **It fits easily into your office**, either as a desktop unit or a hard-working floor model with plenty of paper capacity. Both require only front and side access.
- **PrintingScout® alerts** and media size sensors offer built-in help to ensure your job is printed right.
- **PhaserSMART®** remote diagnostic tool offers solutions and trouble-shooting help if needed, saving you time.
- **CentreWare® Internet Services** embedded web server allows you to manage, configure and troubleshoot your printer from any location on the network using a web browser.
- **Smart Tray** feature provides real-time paper tray status at your desktop – showing available media types and sizes – and automatically selects the correct tray.
- **Smart two-sided printing** feature automatically detects single-page print jobs and bypasses the duplex unit.

### Phaser® 7760 Quick Facts

- Print up to 35 ppm color and 45 ppm black-and-white
- True 1200 x 1200 dpi
- 800 MHz processor
- 150,000 pages/month duty cycle
- 512 MB memory, expandable to 1 GB

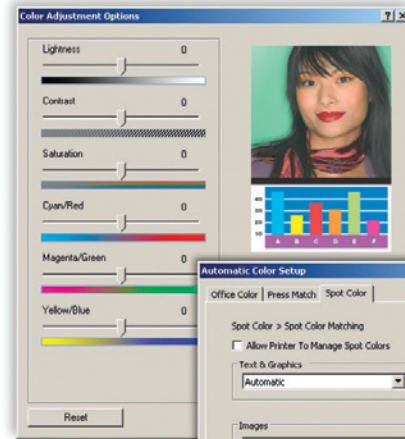
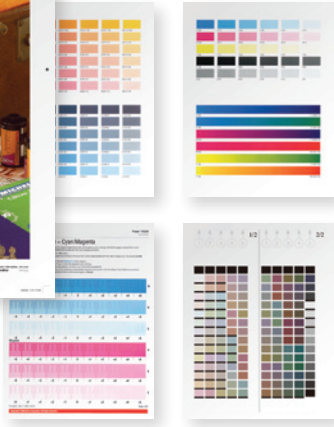


**WxDxH:**  
**7760DN**  
25.4 x 28.5 x 19.4 in.  
644 x 724 x 493 mm

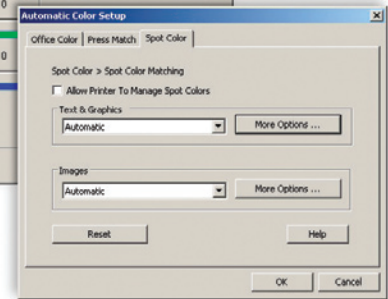




Built in color calibration tools give you the final output you want.



Advanced Color tools allow you to fine-tune output to your specifications.



- 1 150-sheet Tray 1 feeds a wide range of custom-size media all the way up to 12.6 x 47 in. banner sheets
- 2 500-sheet main tray supports custom sizes up to 11.7 x 17 in.
- 3 1,500-sheet Feeder (standard on Phaser 7760GX) includes three universal trays that support paper sizes up to 11 x 17 in. and boosts total paper capacity to 2,150 sheets
- 4 2,500-sheet Feeder (standard on Phaser 7760DX) includes one universal tray and two letter-size trays. It boosts total paper capacity to 3,150 sheets
- 5 Automatic two-sided printing for convenient, paper saving output
- 6 Choose one of two optional finishers and eliminate the effort and expense of manually collating, folding and stapling.



### Phaser® 7760 Printer Configurations

#### Phaser 7760DN

- 2-Tray, 650-sheet capacity
- Automatic two-sided printing
- 10/100/1000 Base-TX Ethernet, USB 2.0 connectivity

#### Phaser 7760GX

##### 7760DN model plus:

- 1,500-sheet High Capacity Feeder for 2,150-sheet total capacity
- PhaserMatch® 4.0 color management

#### Phaser 7760DX

##### 7760DN model plus:

- 2,500-sheet High Capacity Feeder for 3,150-sheet capacity
- PhaserMatch® 4.0 color management

#### Options

- Additional Memory
- 1,500-sheet High-Capacity Feeder
- 2,500-sheet High-Capacity Feeder
- Advanced Finisher
- Professional Finisher
- Printer Cart
- PhaserMatch 4.0

# Phaser® 7760

## Color Laser Printer



	Phaser 7760DN	Phaser 7760GX	Phaser 7760DX
<b>Speed</b>	Up to 35 ppm color / 45 ppm black-and-white		
<b>Duty Cycle</b>	Up to 150,000 pages / month		
<b>Paper Handling</b> Paper input	<b>Tray 1:</b> 150 sheets; Custom sizes: 3.95 x 5.5 to 12.6* x 47.25 in. / 100 x 140 mm to 320 x 1200 mm		
	<b>Tray 2:</b> 500 sheets; Custom sizes: 5.5 x 7.15 to 11.7 x 17 in. / 140 x 182 mm to 297 x 432 mm		
	Optional	<b>Tray 3:</b> 500 sheets; Selectable sizes: up to 11 x 17 in. / A3 (297 x 420 mm)	
	Optional	<b>Tray 4,5:</b> 1,000 sheets; Selectable sizes: up to 11 x 17 in. / A3 (297 x 420 mm)	<b>Tray 4,5:</b> 2,000 sheets; 8.5 x 11 in. / A4 (210 x 297 mm)
Finishing options*	<b>Advanced Finisher:</b> 50-sheet multi-position stapling, 3-hole punch, up to 3,500 sheets		
	<b>Professional Finisher:</b> 50-sheet multi-position stapling, 3-hole punch, saddle-stitch booklet making, v-folding, up to 2,000 sheets		
Automatic two-sided printing	Standard		
<b>Print</b> First-page-out-time	As fast as 9 seconds color, 6 seconds black-and-white		
Resolution (max)	Up to 1200 x 1200 dpi		
Processor	800 MHz		
Memory (std / max)	512 MB / 1 GB		
Connectivity	Ethernet 10/100/1000 Base-TX, USB 2.0		
Page description languages	Adobe® PostScript® 3™, PCL® 5c emulation, Adobe PDF-Direct		
Print features	Standard	Custom Size Pages, Booklet Printing, Banner-size Printing, Smart Trays, Proof, Secure, Saved and Personal Print, Personal Saved, Print With, PDF Direct, Extended Font Storage, Job Collation, PhaserSMART®, Intelligent Ready, Scaling, Watermarks, Separation Pages, N-up, Run Black, Smart Duplexing, Remote printing, Job Pipelining	
		PhaserCal® Color Calibration	PhaserCal® plus PhaserMatch® 4.0 Color Management
<b>Accounting</b>	Job Accounting, Usage Analysis Tool		
<b>Warranty</b>	One-year on-site warranty, Xerox Total Satisfaction Guarantee		

\*Width of 12.6 is limited in length, performance of banner-size printing is affected by media length and media weight

### Device Management

CentreWare® IS Embedded Web Server, Email Alerts, Printer Neighborhood, CentreWare® Printer Management Software, Job Accounting, Usage Analysis Tool, PrintingScout® Alert notification

### Print Drivers

Windows® XP/Server 2003/2008/Vista, Mac OS® 9.x/X, version 10.2 or higher, Novell NetWare® 5.x/6.x, UNIX (Linux® 5.2+, Sun OS 4.x, Sun Microsystems Solaris™ 2.4+, DEC, HP/UX 11.x, IBM AIX® 4.2+, SGI, SCO), Xerox Walk-Up® Printer Drivers with Windows

### Font Capability

137 PostScript® fonts; 81 PCL® fonts

### Color Standards

PANTONE®-approved solid-color simulations, Adobe PostScript device-independent color, CIE International color standards, and support for ICC, ICM and Apple ColorSync color management systems, TekColor Dynamic Correction, PhaserMatch 4.0

### Media Handling

Tray 1: 20 lb. bond to 90 lb. cover (75–255 gsm); Trays 2-5: 20 lb. bond to 80 lb. cover (75–220 gsm); Automatic 2-sided printing: 20–40 lb. bond (75–169 gsm); Finishing: Staples on media up to 32 lb. Bond (80 gsm), Folds and Staples up to 10 booklets of 10 sheets; Media types: Plain paper, envelopes, transparencies, labels, card/cover, glossy

### Operating Environment

Temperature: Storage: -20° to 48° C (-4° to 122° F); Operating: 10° to 32° C (50° to 90° F) Relative Humidity: Storage: 30% to 85%, Operating: 10% to 85%. Noise Level: 33dBA standby, 51 dBA running.

### Electrical

110V, 50/60Hz model: Consumption: Printing: 616–684 Watts, Standby: 134 Watts, Power Saver: 13 Watts. 220V, 50/60Hz model: Consumption: Printing: 764 Watts, Standby: 135 Watts, Power Saver: 14 Watts, ENERGY STAR® qualified printer; Default time to Power Saver: 60 min.

### Dimensions (WxDxH)

7760DN: 25.4 x 28.5 x 19.4 in. (644 x 724 x 493 mm), weight: 202 lb. (92 kg); 7760GX/7760DX: 25.4 x 28.5 x 33.7 in. (644 x 724 x 857 mm), weight: 7760GX: 268.1 lb. (122 kg), 7760DX: 290.2 lb. (132 kg); Finisher: 25.4 x 35 x 39 in. (644 x 889 x 991 mm), weight: Advanced: 182.6 lb. (83 kg), Professional: 252.6 lb. (115 kg); Cart: 22.25 x 23.75 x 14.7 in. (572 x 602 x 373 mm) weight: 34.6 lb. (15.7 kg)

### Certifications

Listed to UL 60950-1/CSA 60950-1-03, 1st Edition, FDA/CDRH – Class 1 Laser Product, FCC Part 15, Class A, Canada ICES-003, Class A, CE marked, Low Voltage Directive 73/23/EEC, EN 60950-1, 1st Edition, EN 60825-1 – Class 1 Laser Product, EMC Directive 89/336/EEC, EN 55022, Class A, EN 55024, RoHS Directive 2002/95/EC, WEEE Directive 2002/96/EC

### Supplies

Black: 32,000 pages <sup>1</sup>	106R01163
Cyan: 25,000 pages <sup>1</sup>	106R01160
Magenta: 25,000 pages <sup>1</sup>	106R01161
Yellow: 25,000 pages <sup>1</sup>	106R01162
Staple Pack	
Stacker Staples: 15,000	008R12941
Booklet Staples: 20,000	008R12925

<sup>1</sup> Capacities are approximate, based on 5% coverage on an A-sized page.

### Routine Maintenance Items

Imaging Unit: Up to 35,000 pages	108R00713
Fuser (110 V): Up to 100,000 pages	115R00049
Fuser (220 V): Up to 100,000 pages	115R00050
Waste Cartridge: Up to 27,000 pages	108R00575
Transfer Roller: Up to 100,000 pages	108R00579
Belt Cleaner Assembly	108R00580

### Options

512 MB Phaser Memory	097S03635
1,500-sheet High-Capacity Feeder:	
three 500-sheet Universal trays	097S03628
2,500-sheet High-Capacity Feeder: one 500-sheet	
Universal tray, plus two 1,000-sheet A trays	097S03629
Advanced Finisher <sup>2</sup> 3,500 sheets,	
stacker, stapler, 3-hole punch	097S03630
Professional Finisher <sup>2</sup> 2,000 sheets,	
stacker, stapler, 3-hole punch, booklet maker	097S03631
Printer Cart	097S03748
PhaserMatch 4.0	097S03634

<sup>2</sup> Installation by Xerox recommended



Call today. For more information, call **1-877-362-6567** or visit us at [www.xerox.com/office](http://www.xerox.com/office)

