


Xerox® WorkCentre® 7220/7225
Xerox® WorkCentre® 7830/7835/7845/7855
Xerox® WorkCentre® 7970
Xerox® ColorQube® 9302/9303
Xerox® Color C60/C70 Printer
Xerox® Color C75® Press



Xerox® A3 and Light Production Color Multifunction Printer

Product Positioning Guide



A3 and Light Production Color Multifunction Printer

Product Positioning Guide

Whether it's for a small business or a large enterprise, choosing the right color multifunction printer involves several important considerations. To help you determine the best choice for your business needs, this Product Positioning Guide provides insight into the various technologies and features offered by the following Xerox® color A3 and light production devices.

Workgroup

Departmental



ConnectKey®

Xerox® WorkCentre® 7220/7225 Color Multifunction Printer

Seamlessly create and share business-critical information, in full office color, and take your business or workgroup to a higher level of performance – without hurting the bottom line.

- 20/25 ppm color
- 20/25 ppm black-and-white
- Laser technology and EA Toner with ultra low-melt technology
- Xerox® ConnectKey® Technology



ConnectKey®

Xerox® WorkCentre® 7830/7835/7845/7855 Color Multifunction Printer

Achieve high-impact color documents that impress customers and deliver results – while minimizing costs.

- 30/35/45/50 ppm color
- 30/35/45/55 ppm black-and-white
- HiQ LED technology and EA Toner with ultra low-melt technology
- Xerox® ConnectKey Technology



ConnectKey®

Xerox® ColorQube® 9302/9303 Color Multifunction Printer

Advanced, cartridge-free Solid Ink technology is the waste-conscious solution that delivers consistently exceptional color quality and dramatically lower printing costs for your workgroup.

- 45/55 ppm color
- 55/60 ppm black-and-white
- Solid Ink technology
- Xerox® ConnectKey Technology

Entry Production Color



ConnectKey®

Xerox® WorkCentre® 7970 Color Multifunction Printer

For document-intensive office environments where the workloads are demanding, security is a must, and ease-of-use and ease-of-management truly matter.

- 70 ppm color
- 70 ppm black-and-white
- HiQ LED technology and EA Toner with ultra low-melt technology
- Xerox® ConnectKey Technology



Xerox® Color C60/C70 Printer

Benchmark image quality, expansive media handling, and professional finishing with efficient, secure and flexible color workflows deliver an affordable print solution for any environment.

- 60/70 ppm color
- 65/75 ppm black-and-white
- Laser technology and EA Toner with ultra low-melt technology
- Xerox® Integrated Color Server with optional Xerox® EX C60/C70 Print Server powered by Fiery®, Xerox® FreeFlow® Print Server Integrated for the Xerox® Color C60/C70 Printer and Xerox® EX-i C60/C70 Print Server Powered by Fiery®



Xerox® Color C75® Press

Whether you're looking for new revenue opportunities or that ability to reduce costs, consider the first true production-capable printer that makes it easy to get started in digital production printing.

- 75 ppm color
- 75 ppm black-and-white
- Laser technology and EA Toner with ultra low-melt technology
- Choice of Xerox® FreeFlow® Print Server, Xerox® EX C75 Print Server powered by Fiery® or Xerox® EXi C75 Print Server powered by Fiery®

Differentiate Yourself with the Power of Color

There's no denying that using color in your business documents delivers measurable results. Color grabs attention, improves brand recognition, reduces search time and increases sales.

To help you better focus on which Xerox® color device is the right solution for you, consider the following factors.

- **Are you new to color printing?** If so, consider the Xerox® WorkCentre® 7220/7225 or Xerox® WorkCentre® 7800 series. Both product families offer excellent color output and document finishing options, plus copying, faxing and scanning functionality for your everyday business needs.
- **Are you currently printing in color, but need higher productivity?** If so, consider the Xerox® WorkCentre® 7970 or Xerox® ColorQube® 9302/9303. Each device is a color workhorse for document-intensive environments, with advanced finishing capabilities and powerful, workflow-enhancing, multifunction performance.
- **Are you looking for benchmark color quality, advanced finishing options, multifunction capabilities, and production-level speed?** If so, take a closer look at the Xerox® Color C60/C70 Printer or Xerox® Color C75® Press. Both devices mean serious color performance for virtually any type of document your business demands.

Many factors determine the quality of the print output delivered by a color multifunction printer. Print resolution, toner vs. Solid Ink, and intuitive, user-friendly color adjustments all are key components of a device's ability to deliver the results you demand to bring your high-end color print jobs in-house.

Print Resolution

Measured as dots per inch, or dpi, print resolution is just one factor that contributes to a color document's overall appearance. The devices covered in this positioning guide produce print resolutions ranging from 600 x 600 dpi to 2400 x 2400 dpi.

Toner and Solid Ink

Xerox® EA Toner with High Grade (HG) technology – chemically grown to produce the market's smallest, most uniformly shaped particles – delivers sharper clarity, excellent shadowing and outstanding fine-line detail compared to traditional toners used by competitive devices.

Xerox® EA Toner with ultra low-melt technology provides the advantages of EA-HG toner while achieving minimum fusing temperature at 68 degrees F (20 degrees C) lower temperature than conventional toner for even more energy savings and brilliant, glossy output even on ordinary paper.

Exclusive Xerox® Solid Ink technology prints a wider range of colors, more consistently, than most competitive color laser devices. Plus, Solid Ink sticks are cartridge-free and engineered for maximum ease-of-use. Each Solid Ink stick is uniquely shaped for easy drop-in loading, and ink can be topped off at any time – no downtime to reload.

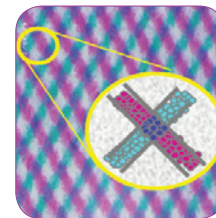
PANTONE® / Corporate Color Matching

The ability to match corporate colors using the PANTONE MATCHING SYSTEM® is important in some environments. Xerox offers a wide variety of choices to fit customers' specific needs:

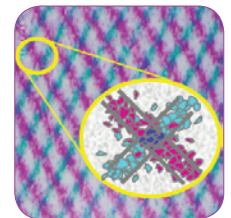
- PANTONE Simulations – color output is tuned by Xerox to the best possible match for the device.
- PANTONE-licensed – PANTONE and Xerox collaborate to fine-tune colors.
- PANTONE Editors – Xerox offers power users the option to use the PANTONE Licensed color or use Xerox-patented editors that provide the ability to super-tune to your personal taste.



Each Solid Ink stick is uniquely shaped to fit the correct slot, making ink loading fast, easy and clean.



EA-HG Toner



Competitive Toner

Color By Words: Unique Color Control

Simply select your desired color modifications from a drop-down list and Color By Words will adjust your printout.



Original photo not right? Use the Color By Words drop-down list and choose “yellow-green colors a lot more green,” and “red colors a lot more vivid.” Picture-perfect results.

Color Features

	Xerox® WorkCentre® 7220/7225	Xerox® ColorQube® 9302/9303	Xerox® WorkCentre® 7830/7835/7845/7855	Xerox® WorkCentre® 7970	Xerox® Color C60/C70 Printer	Xerox® Color C75® Press
Print Resolution	Up to 2400 x 600 image quality	Up to 600 x 600 dpi	Up to 1200 x 2400 dpi	Up to 1200 x 2400 dpi	Up to 2400 x 2400 dpi	Up to 2400 x 2400 dpi
Copy Resolution	Up to 600 x 600 dpi	Up to 600 x 600 dpi	Up to 600 x 600 dpi	Up to 600 x 600 dpi	Up to 600 x 600 dpi	Up to 2400 x 2400 dpi
Scan Resolution	Up to 600 x 600 dpi	Up to 600 x 600 dpi	Up to 600 x 600 dpi	Up to 600 x 600 dpi	Up to 600 x 600 dpi	Up to 600 x 600 dpi
Printing Technology	EA Toner with ultra low-melt technology	Solid Ink	EA Toner with ultra low-melt technology	EA Toner with ultra low-melt technology	EA Toner with ultra low-melt technology	EA Toner with dry ink technology
Color By Words	Yes	Yes	Yes	Yes	No	No
Optional Color Controllers	None	None	EFI™ Server	None	<ul style="list-style-type: none"> Xerox® EX-i C60/C70 Print Server Powered by Fiery® Xerox® FreeFlow® Print Server Integrated for the Xerox® Color C60/C70 Printer Xerox® EX C60/C70 Print Server Powered by Fiery® 	Choice of: <ul style="list-style-type: none"> Xerox® FreeFlow® Print Server Xerox® EX C75 Print Server powered by Fiery® Xerox® EXi C75 Print Server powered by Fiery®
PANTONE® / Color Certifications	PANTONE Simulations	PANTONE Simulations	PANTONE-licensed (available with optional EFI Server)	PANTONE Simulations	PANTONE Matching, Fogra Offset, IDEAlliance, Gracol Offset, Adobe PDF Print Engine	PANTONE Matching, Fogra Offset, IDEAlliance, Gracol Offset, Adobe PDF Print Engine

Productivity Advantages

The A3 and light production color multifunction printers covered in this positioning guide efficiently process your documents with industry-leading performance. Get more work done in less time with convenience features that simplify document management and enhance productivity.

Output Speed

Printing professionals and other small to medium commercial printers will appreciate the high output performance with color print speeds that range from 20/25 ppm for the Xerox® WorkCentre® 7220/7225 to 75 ppm on the Xerox® Color C75® Press.

First-copy-out Time (FCOT)

FCOT is simply the amount of time it takes for the device to output the first page of a given document, measured from the moment the copy-job data has been processed by the device.

Average Monthly Print Volume (AMPV)

AMPV is the device's recommended monthly print volume. This average is based on expected consumable yields and other factors, and should be used as a guide when choosing the A3 color device that will both meet your current productivity requirements, as well as your future needs should your productivity demands increase.

Duty Cycle

Duty cycle is the maximum number of recommended images produced on a particular device for a given month. Use duty cycle as a measure of a device's maximum print capacity within a one-month duration that is deemed acceptable by service.

Concurrent Processing

Concurrent processing keeps the busiest workgroups productive. Use multiple functions simultaneously to handle a variety of complex jobs with ease.

Print Around

Our Print Around feature lets you move your job ahead of stalled documents in the queue.

Xerox® Smart Kit® Technology

Easy-to-change critical supplies are constantly monitored to predict and prevent downtime.

Load While Run

The load while run feature allows you to replenish a device's toner, ink, and/or paper (from any tray not feeding an in-process job run) without the need for interrupting a job run, keeping productivity at its peak.

Paper Input Capacity

Standard paper input capacities for the A3 and light production color multifunction printers range from 1,090 sheets (WorkCentre 7220/7225) to 3,300 sheets (Xerox® ColorQube® 9302/9303). Optional paper trays and feeders are available to significantly increase paper input capacity.

Media Sizes

It's important to consider the types of documents you'd like to produce, and then ensure the A3 and light production color multifunction printer you choose is capable of handling the right range of media sizes.

Full Range of Scanning Solutions

Use scanning to reduce resources spent managing hard copy files. Simply scan your printed documents and get searchable digital files that can be automatically shared via email or network folder, or stored on the device or, in some cases any USB memory device for true portability.

The A3 and light production color multifunction printers quickly scan your documents at speeds ranging between 45 and 200 images per minute.

Print from / Scan to USB Memory Device

Connect any standard USB memory device at the multifunction printer's front panel for faster document delivery when you're not at your computer (standard on select models).

Xerox® Mobile Print Solution

Xerox makes mobile printing simpler and more convenient, while keeping your business secure. That's why we're empowering today's mobile professionals with the freedom to send print jobs from any email-enabled device.

Simple. There's no software to load on the mobile device, no searching for online printer information, or time wasted looking for the right application. This solution works with any email-enabled device. Plus, there's no dependence on administrative support staff for printing tasks.

Convenient. Print Microsoft® Office® documents, including Word®, Excel® and PowerPoint®, as well as PDF files.

Secure. Mobile workers can print directly from their mobile devices and retrieve documents at an enabled Xerox® MFP with a secure confirmation code. Mobile professionals will no longer have to rely on others to print sensitive documents or risk leaving prints in the output tray.

Xerox® Workflow Solutions

The power of Xerox® Workflow Solutions – an added ingredient inside most Xerox® MFPs – is the technology's ability to transform the way your organization gets vital work done. When people work efficiently, in less time and with fewer steps, productivity goes up. Stress goes down. So do errors. Whether you have only a few people on your team or a very large workgroup, Xerox offers a wide range of MFPs that deliver flexibility and advanced features to copy, print, scan and fax – all from one device. It's about streamlining your workflow and it starts by using Xerox® Workflow Solutions right from your MFP.

Productivity Features

	Xerox® WorkCentre® 7220/7225	Xerox® ColorQube® 9302/9303	Xerox® WorkCentre® 7830/7835/7845/7855	Xerox® WorkCentre® 7970	Xerox® Color C60/C70 Printer	Xerox® Color C75® Press
Output Speed						
Color	20 / 25 ppm	45 / 55 ppm	30 / 35 / 45 / 50 ppm	70 / 70 ppm	60 / 70 ppm	75 ppm
Black-and-white	20 / 25 ppm	55 / 60 ppm	30 / 35 / 45 / 55 ppm	70 / 70 ppm	65 / 75 ppm	75 ppm
First-copy-out Time (as fast as)						
Color	8.4 seconds	8.2 seconds	9 / 9 / 7.5 / 7.1 seconds	7.3 seconds	From the Platen: As fast as 7.8 seconds From the DADF: As fast as 9.6 seconds	11.2 seconds
Black-and-white	7.1 seconds	7.2 seconds	7.7 / 7.7 / 6.4 / 5.9 seconds	5 seconds	From the Platen: 5.1 seconds From the DADF: 5.3 seconds	7.5 seconds
Average Monthly Print Volume¹	Up to 6,250 pages	15,000 to 75,000 pages	8,000 to 22,000 pages	10,000 to 40,000 pages	10,000 to 50,000 pages	20,000 to 75,000 pages
Monthly Duty Cycle²	Up to 50,000 / 60,000 pages	Up to 225,000 / 300,000 pages	Up to 90,000 / 110,000 / 200,000 / 300,000 pages	Up to 300,000 pages	Up to 300,000 pages	Up to 300,000 pages
Concurrent Processing	Yes	Yes	Yes	Yes	Yes	Yes
Print Around	Yes	Yes	Yes	Yes	Yes	Yes
Smart Kit® Components	Yes	Yes	Yes	Yes	Yes	Yes
Load while Run	Paper	Paper/Ink	Paper	Paper	Paper/Toner	Paper/Toner
Paper Input Capacity (std/max)	1,090 / 2,130 sheets	3,300 / 7,300 sheets	2,280 / 5,240 sheets	3,140 / 5,140 sheets	3,260 / 7,260 sheets	1,900 / 5,900 sheets
Media Sizes	3.5 x 3.9 in. to 11.7 x 17 in.	4.1 x 8.3 to 12.6 x 18 in.	3.5 x 3.9 in. to 12.6 x 19 in.	3.5 x 3.9 in. to 12.6 x 19 in.	4 x 6 in. to 13 x 19.2 in.	4 x 6 in. to 13 x 19.2 in.
Scan Speed						
Color	55 ipm	60 ipm	7830 / 7835: 70 ipm 7845 / 7855: 133 ipm	133 ipm	200 ipm	200 ipm
Black-and-white	55 ipm	84 ipm	7830 / 7835: 70 ipm 7845 / 7855: 133 ipm	133 ipm	200 ipm	200 ipm
Print from / Scan to USB	Yes / Yes	Yes / Yes	Yes / Yes	Yes / Yes	Yes / Yes	No / No
Xerox® Workflow Solutions Technology	Yes	Yes	Yes	Yes	Yes, limited – see each solution for compatibility	Yes, limited – see each solution for compatibility
User Interface	7-inch embedded touch screen	8.5-inch embedded touch screen	8.5-inch embedded touch screen	9-inch embedded touch screen	10-inch upright touch screen	10-inch upright touch screen
Scan / Fax Preview	No	No	No	No	Yes	No
Xerox® Mobile Print Solution	Optional	Optional	Optional	Optional	Optional	Optional

¹ Expected regular monthly throughput

² Maximum volume capacity expected in any one month. Not expected to be sustained on a regular basis.

Cost Reduction Advantages

One of the most critical considerations when evaluating A3 and light production color multifunction printers is cost of operation. Look for tools that allow you to control access to the device's color features. Also, look for accounting capabilities that help you track and assign printing costs.

Xerox® Standard Accounting

With Xerox® Standard Accounting, administrators can track copy, scan, print and fax jobs as well as manage user's access to color copies and prints. Set limits for individual users on the number of print, copy, scan, and fax jobs, and account for device activity down to the user, group or department level.

Network Accounting

Network Accounting enables a device to integrate with accounting solutions from Xerox Business Partners such as Equitrac, Copitrack and Pharos. For centralized monitoring, Network Accounting gives customers up-to-date information on how multifunction printers are used by account and user, including time and date of the activity. Network accounting provides enterprise-wide reporting and global user/device management.

Foreign Device Interface Kit

A foreign device interface kit enables connectivity to external third-party control devices such as magnetic card readers or coin devices.

Color Authorization via LDAP or MS Active Directory™

Color authorization via MS Active Directory makes it easy to integrate any A3 and light production color multifunction printer with existing IT systems. Network administrators can limit color printing and copying to select users for easy IT setup and maintenance.

Black-only Print Drivers

Xerox offers customers the ability to deploy black-only print drivers, which allow administrators to set the default in the driver for printing in black-and-white only.

Application Default Settings

Save time and money by customizing your print driver's default application settings. Now you can quickly choose default settings per application, such as always printing Microsoft® Outlook® emails in black-and-white, PowerPoint® presentations in duplex mode, and more. You can also customize print driver settings for economy and efficiency. Set two-sided printing, choose N-up for printing multiple pages on a single sheet as your default, or adjust settings for specific applications.

Finishing Options

Reduce outsourcing costs. Bring expensive printshop operations in-house with powerful finishing options that include everything from folded brochures to saddle-stitched booklets, on media up to 12 x 18 in.

Set User Permissions

User permissions provide the ability to restrict access to print features by user, by group, by time of day, and by application. Users and groups can be set up with varying levels of access to print features. For example, limits can be set that allow color print jobs only during certain hours of the day; PowerPoint presentations automatically print in duplex mode; or Outlook emails always print in black-and-white.

Unique Price Plans for the Xerox® ColorQube® 9300 Series Multifunction Printer

And now, for the first time, color is priced right for any office. Bring your business to life with the Xerox® ColorQube® 9300 series multifunction printer, and get dramatically lower color printing costs for your workgroup. With the ColorQube 9300 series, you can make every document stand out.

- Low color-page prices make the ColorQube 9300 series more cost-effective than comparable laser multifunction printers.
- Unique price plans are based on the actual color used on the page. No more paying expensive full-color page prices for small amounts of color.
- Pages with useful amounts of color are billed at the same rate as black-and-white pages. The more color pages you print, the more you save. On most color pages, your price will drop significantly.

Cost Reduction Features

	Xerox® WorkCentre® 7220/7225	Xerox® ColorQube® 9302/9303	Xerox® WorkCentre® 7830/7835/7845/7855	Xerox® WorkCentre® 7970	Xerox® Color C60/C70 Printer	Xerox® Color C75® Press
Xerox® Standard Accounting	Yes	Yes	Yes	Yes	Yes	No
User Permissions	Yes	Yes	Yes	Yes	No	No
Network Accounting Enablement	Yes	Yes	Yes	Yes	Yes	No
Foreign Device Interface Kit	Optional	Optional	Optional	Optional	Optional	Optional
Color Authorization via LDAP or MS Active Directory™	Yes	Yes	Yes	Yes	Yes	No
Black-only Print Drivers	Yes	Yes	Yes	Yes	Yes	Yes
Application Default Settings	Yes	Yes	Yes	Yes	Yes	Yes
Finishing Options	Multiposition stapling, 2/3-hole punching, booklet making	Multiposition stapling, 2/3-hole punching, booklet making, C/Z-folding, inserting	Multiposition stapling, 2/3-hole punching, booklet making, V-folding	Multiposition stapling, 2/4-hole or 2/3-hole punching, booklet making, C/Z folding	Multiposition stapling, 1, 2, 4 staples, 2/4-hole or 2/3-hole punching, booklet making, Trifolding, C/Z-folding, Z-folding, inserting, GBC® punching, Xerox® SquareFold® trimming	Multiposition stapling, 2/4-hole or 2/3-hole punching, 200-sheet interposing, booklet making, Tri-folding, V-folding, GBC Punching, SquareFold trimming, High-capacity stacking, 3 knife trimming

Sustainability Advantages

How does an A3 and light production color multifunction printer put you on a path to a greener workplace? Sustainability can be assessed in a variety of ways. Do they help you conserve paper and other consumables? With which environmental standards do the devices comply?

Power Consumption

Consuming less power in standby, low power and operating modes results in greater energy savings in the office.

Earth Smart Driver Settings

Our innovative new Earth Smart feature allows you to choose the most environmentally sensitive options for your job, such as setting automatic 2-sided printing as the default. You can also save paper by turning off costly Banner page printing and instead include print job ID information in the margin of the first page.

EA Toner with Ultra Low-melt Technology

Our EA Toner achieves lower fusing temperatures than conventional toners (68° F/20° C) for additional energy savings with a smooth, brilliant and even on ordinary papers.

Cartridge-free Solid Ink

Solid Ink sticks avoid the cartridge and the packaging, creating up to 90% less waste versus comparable laser devices.

Hi-Q LED Print Engine

Proven Hi-Q LED print engine technology consumes less energy and space and produces less noise.

LED Scanner

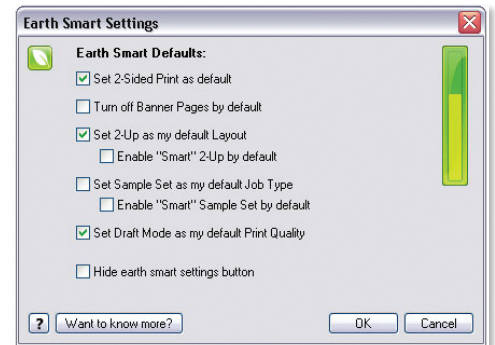
The innovative LED scanner consumes 1/3 less power than traditional Xenon lamps.

Automatic Duplexing

Automatic duplexing on letter- / A4-size media is just as fast as printing one-sided pages.

Paperless Faxing

LAN Fax sends faxes directly from applications on your desktop. Incoming faxes can be viewed as thumbnail images on the user interface – so you only print what's important.



Xerox has a longstanding focus on green innovation. Xerox offers environmentally responsible choices for paper and media such as recycled media with up to 100% post-consumer recycled content and paper that adheres to internationally recognized standards for sustainable forestry management. We've also diverted over 2 billion pounds of waste from landfills through our Product Take-back and Recycling Program (visit www.xerox.com/environment to learn more).

Sustainability Features

	Xerox® WorkCentre® 7220/7225	Xerox® ColorQube® 9302/9303	Xerox® WorkCentre® 7830/7835/7845/7855	Xerox® WorkCentre® 7970	Xerox® Color C60/C70 Printer	Xerox® Color C75® Press
Power Consumption Sleep	7220: 4.83 watts 7225: 4.79 watts	105 watts	<4.8 watts	<3.5 watts	3.0 watts	10.7 watts
Running (Average)	7220: 389 watts 7225: 441 watts	750 watts	<862 watts	<1022 watts	C60: 1,091 watts C70: 1,113 watts	1240 watts
Earth Smart Driver Settings	Yes	Yes	Yes	Yes	Yes	No
EA Toner with Ultra Low-melt Technology	Yes	No	Yes	Yes	Yes	Yes
Solid Ink	No	Yes	No	No	No	No
HiQ-LED Print Engine	No	No	Yes	Yes	No	No
LED Scanner	Yes	No	Yes	Yes	Yes	Yes
Automatic Duplexing	Yes	Yes	Yes	Yes	Yes	Yes
Paperless Faxing (LAN Fax)	Optional	Optional	Optional	Optional	Optional	No
ENERGY STAR®	Yes	Yes	Yes	Yes	Yes	Yes
Noise Emission Standby	26.7 dBA	40 dBA	18 dBA	26.7 dBA	18 dBA	55 dBA
Continuous	52 dBA	63 dBA	56 dBA	65.7 dBA	56 dBA	78 dBA

Security Advantages

What types of security requirements are critical to your business or organization? The A3 and light production color multifunction printers' advanced security features protect a workflow's entry and exit points, ensuring the safety and integrity of business-critical information.

Authentication

Access to features such as Scan to Email can be set up to require user authentication at the device. Authentication can require a device-based password or be seamlessly integrated into an IT environment via MS Active Directory, Kerberos, SMB and LDAP.

IPsec

Print jobs sent the multifunction printer are encrypted utilizing the IPsec protocol.

SNMP V 3.0

Secures network data using industry-standard SNMP V 3.0 protocol.

Secure Print

The Secure Print feature allows a print job with a unique PIN to be sent to the multifunction device, where the job prints once the user enters the PIN at the device's front panel interface.

HTTPS / 802.1X

Ensures devices connected to the network are properly authorized.

Image Overwrite

In adherence with the Department of Defense algorithm, the Image Overwrite function performs a three-pass overlay of a predefined pattern of 1s and 0s which overwrites images on the hard disk.

Xerox Secure Access Unified ID System[®]

Xerox Secure Access Unified ID System integrates with a customer's existing employee/student ID badge solution. A flexible and convenient authentication system, Xerox Secure Access Unified ID System enables users to log into a device with a swipe of their magnetic or proximity ID card. This gives users quick, easy and secure access to device functions that need to be tracked for accounting or regulatory requirements.

Common Criteria Certification

Common Criteria for IT Security Evaluation is an internationally recognized methodology (ISO 15408) for evaluating the security claims of hardware and software vendors. The five major elements of Common Criteria are availability, integrity, confidentiality, accountability and non-repudiation. Xerox submits its products for validation by an independent, government-sponsored laboratory for testing and certification. Certification is a costly, rigorous and time-consuming process.

Check the Xerox security pages (www.xerox.com/security) or the Common Criteria Portal (www.niap-ccevs.org), for more up-to-date information.

Powerful Partnerships

Xerox[®] devices enabled by Xerox[®] ConnectKey[®] Technology include McAfee[®] technology integration, resulting in the industry's first lineup of multifunction printers that protect themselves from potential outside threats. McAfee's whitelisting technology ensures only safe, pre-approved files or functions are executed on your devices, minimizing the need to manually update software levels against new security threats. Also, seamless integration with the Xerox[®] Managed Print Services toolset and McAfee ePolicy (ePO) allows for easy tracking and monitoring.

Automatic Cisco[®] TrustSec Identity Services Engine (ISE) integration provides comprehensive visibility of all ConnectKey-enabled MFPs' endpoints to enforce ITcentric security policies and compliance.

Industry Certifications

Xerox[®] multifunction printers include numerous industry certifications relating to print drivers and applications; servers and connectivity; and security. For a complete list, visit www.xerox.com/IndustryCertifications.

Security Features

	Xerox® WorkCentre® 7220/7225	Xerox® ColorQube® 9302/9303	Xerox® WorkCentre® 7830/7835/7845/7855	Xerox® WorkCentre® 7970	Xerox® Color C60/C70 Printer	Xerox® Color C75® Press
Authentication	Standard	Standard	Standard	Standard	Standard	Standard
IPsec	Standard	Standard	Standard	Standard	Standard	Standard
SNMP V 3.0	Standard	Standard	Standard	Standard	Standard	Standard
Secure Print	Standard	Standard	Standard	Standard	Standard	Standard
HTTPS / 802.1X	Standard	Standard	Standard	Standard	Standard	Standard
Image Overwrite	Standard	Standard	Standard	Standard	Standard	Standard
Xerox Secure Access Unified ID System®	Optional	Optional	Optional	Optional	Optional	Optional
Common Criteria Certified	Yes	Yes	Yes	Undergoing evaluation	Undergoing evaluation	No
McAfee® Embedded	Yes	Yes	Yes	Yes	No	No
McAfee ePolicy Compatible	Yes	Yes	Yes	Yes	No	No
Cisco® TrustSEC Identity Services Engine (ISE)	Yes	Yes	Yes	Yes	No	No

By choosing Xerox, you simply get more.

Specifically, you get more cost reduction, more sustainability, more security – and above all, more productivity for your workplace.

Gain Competitive Advantage

- Help grow your business.
- Color and image quality grabs attention, improves brand recognition, reduces search time and increases sales.

Reduce Costs

- Built-in cost-savings help the bottom line.

Achieve Sustainability Goals

- Become a greener workplace.

Ensure Information Security

- Keep critical information safe and secure.

Increase Productivity

- Do more with less.

Products that Help Your Customers Get More

	Xerox® WorkCentre® 7220/7225	Xerox® ColorQube® 9302/9303	Xerox® WorkCentre® 7830/7835/7845/7855	Xerox® WorkCentre® 7970	Xerox® Color C60/C70 Printer	Xerox® Color C75® Press
Gain Competitive Advantage	Good	Better	Best	Best	Best	Best
Productivity	Good	Good	Best	Best	Better	Best
Reduce Costs	Better	Best	Better	Better	Good	Good
Sustainability	Better	Best	Better	Better	Good	Good
Security	Best	Best	Best	Best	Good	Good
Image Quality	Good	Better	Better	Better	Best	Best

Consider the right device for your situation.

<p>Xerox® WorkCentre® 7220/7225</p> <ul style="list-style-type: none"> • Small or medium business looking for all-in-one color device • Upgrading from black-and-white-only printer or MFP • Looking for a low entry price to A3 color • AMPV of less than 6,250 pages • Typical office applications (Microsoft® Office® Suite) • Smallest footprint 	<p>Xerox® ColorQube® 9302/9303</p> <ul style="list-style-type: none"> • High desire for the low color run costs and low total cost of ownership • Desire for high average-monthly-print-volume capability with high-volume color-page output (up to 75k) • Environmentally conscious design • Typical office applications (MS Office Suite) and sophisticated office finishing (C/Z-fold, sheet insertion) • Simple, office-focused color management 	
<p>Xerox® WorkCentre® 7830/7835/7845/7855</p> <ul style="list-style-type: none"> • Typical office applications (MS Office Suite) and simple office finishing capabilities • Desire for mid average-monthly-print-volume capability with good resolution color-page output (up to 22k) • Need for easy to use color management • Leverage Xerox Extensible Interface Platform®-based Xerox® Workflow Solutions applications • Expanded finishing options such as booklet making, folding, etc. 	<p>Xerox® WorkCentre® 7970</p> <ul style="list-style-type: none"> • Require robust platform for higher duty cycle • Potentially higher color and black-and-white speed requirement • Desire for high-monthly-print-volume capability with good resolution color-page output (up to 40k) • Need for easy to use color management • Leverage Xerox Extensible Interface Platform®-based Xerox® Workflow Solutions applications • Typical office applications (MS Office Suite) and advanced office finishing (C/Z fold) 	<p>Xerox® Color C60/C70 Printer</p> <ul style="list-style-type: none"> • Average monthly print volume of 10-50k pages • Desire larger user interface • Sophisticated Production Finishing (C/Z fold, sheet inserter, 25-sheet booklet maker, handling of coated media) and typical office applications (Microsoft® Office® Suite, Adobe® applications) • Limited Office Workflow Solutions (Xerox Extensible Interface Platform®) support such as Xerox® Mobile Print Solution, Equitrac. • Standard Xerox® Integrated Color Server for the Xerox® Color C60/C70 Printer with 2 additional integrated server options: Xerox® EX-i C60/C70 Print Server Powered by Fiery® or Xerox® FreeFlow® Print Server Integrated for the Xerox® Color C60/C70 Printer • Powerful workflow and color management with the optional Xerox® EX C60/C70 Print Server Powered by Fiery®
<p>Xerox® Color C75® Press</p>		
<ul style="list-style-type: none"> • Target AMPV sweet spot is 20-75k • Higher productivity at 75 ppm and single pass scanning • Needs robust, scalable graphic arts capabilities with excellent image quality • Have no need for full MFP functionality including fax and Xerox Extensible Interface Platform functionality. • Higher percentage of mid to heavyweight paper (60 – 110 lb. cover) on larger size media • Better handling of coated media due to IOT smart decurler resulting in flatter output • Auto duplex coated/uncoated media up to 300 gsm/110 lb. cover • High resolution 2400 x 2400 dpi for optional quality printing • Simple image quality adjustment for registration • Signature stitch with SquareFold and trim option for larger size, professional looking booklets GBC Advanced Punch requirement offering a variety of inline punch hole options • Requirement for high-capacity stacking of up to 5,000 sheets • Excellent front to back registration +/- 1.0 mm • Full bleed 12 x 18 in. /SRA3 applications from standard internal trays that all accept up to 13 x 19.2 in. • A choice of DFE workflow options including integrated/standalone Fiery®, Xerox® FreeFlow® Print Server • Need Adobe PDF Print Engine and additional Graphic Communications standards 		

