

XEROX®

CopyCentre®  
C2128/C2636/C3545

WorkCentre® Pro  
C2128/C2636/C3545



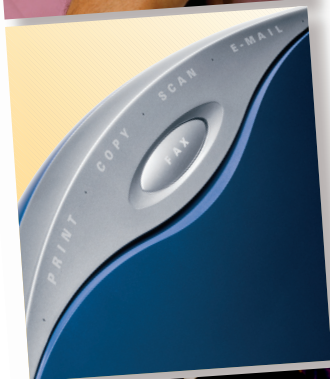
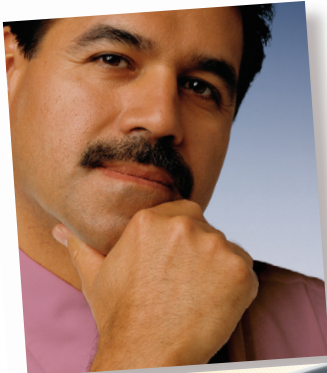
print | copy | scan | fax | email

# Brilliant multifunctional performance



Plus **color**  
when you need it

# Keeps your office performing



## WorkCentre® Pro

C2128 / C2636 / C3545

advanced multifunction

## CopyCentre®

C2128 / C2636 / C3545

copier

At Xerox we continue to create innovative multifunction systems with unparalleled performance, versatility and intelligence that break through your office productivity barriers.

### Xerox delivers the right solution

Whether you need full-featured copying, network printing, e-mail, fax, scan capabilities or digital copying only, with Xerox, you have options. And you can count on us to deliver the exact configuration your office requires. Not to mention the exceptional print quality you expect.

### Even more versatility

You can choose the output speed and configuration that meet your needs. And take advantage of network connectivity tools that help you produce and distribute your documents more efficiently. We've even included a wide array of media handling and advanced finishing options to further enhance your office productivity.

### On top of all this

We've packed in today's most crucial high performance, high impact feature – **color**. You choose when you need it, where you need it and as much as you need of it. Brilliant.

# Get the **functionality** you need

Whether you're looking for a digital copier or a full-featured multifunction system – or capabilities in between – Xerox innovation delivers all the performance and essential features you need. Robust and reliable, modular and upgradeable, these products are designed to meet your needs today – and into the future.

## CopyCentre® C2128/C2636/C3545



copier



### For full featured copying choose a high-speed CopyCentre Digital Copier.

- Black-and-white copying and optional fax for your everyday needs
- Full-color copying when you choose
- Automatic duplex capability makes copying two-sided documents faster and easier
- Advanced finishing options save time, money, and ensure professional results
- Electronic sorting, booklet creation, queue management, build job, program ahead and more
- All the traditional features of your black-and-white copier like multi-up, image repeat, booklet scanning, reduce/enlarge, covers, transparency interleaf, negative image, and more...with the power of color

## WorkCentre® Pro C2128/C2636/C3545



advanced multifunction



### Combines powerful capabilities into an intelligent multitasking unit. Your office benefits from Xerox innovative integration of hard copy with digital technology.

- All the features of the CopyCentre, plus...
- Network printing meets large workgroup requirements for speed, efficiency, and security
- Scan to desktop, network file server, and to document management applications
- Internet fax, network server fax, embedded fax increase efficiency, enhance security, and decrease costs
- E-mail integration for fast distribution of documents
- Network management tools enable simple installation and worry-free administration



# Outstanding productivity. Uncompromising quality.

Control panels are intuitive and easy to use – plus, they're consistent with existing Xerox machines. So once you know how to use one – you know how to use them all.



**Paper Supply**  
**Auto Paper**

"Auto" features save time by making appropriate selections for you.

## Stay on the fast track.

Have deadlines to meet? Not to worry. Quick digital processing, multi-tasking capabilities and an easy-to-operate interface help you get the job done on time, every time.

- Print and copy speeds up to 45 ppm black-and-white and 35 ppm color meet the demands of busy workgroups.
- Multi-tasking operation means multiple users can scan, process, print, transmit faxes and manage the queue – a helpful feature in maximizing business efficiency.
- Technical advances, a short paper path and fewer moving parts prevent paper jams and service calls, and extend operating life.
- State-of-the-art design and engineering makes these devices extremely reliable. You are alerted ahead of time when to replace a consumable. And the SMart Kit™ customer replaceable units are easy to change and high yield, keeping downtime to a minimum.

## Print to impress.

The proof is in the printout – impeccable detail, crisp images, outstanding color. Printing so clear, it makes a remarkable impression.

- 1200 x 1200 dpi resolution makes images sharp and clear. An impressive image can speak volumes for presentations.
- Single-pass technology improves image quality. And the Trickle Charge Development system maintains print consistency all day long – you won't have to do a quality check at the eleventh hour.
- Remarkable detail, subtle half-tones and clarity of fine lines – our next-generation Emulsion Aggregate Toner delivers it. Plus, printed paper is easy to write on and posting notes adhere properly.
- With Intermediate Belt Transfer, you get better registration and more consistent image transfer on all media. The results? Outstanding quality and longer lasting part life – another cost efficiency for you.

*Belt Nip Fusing provides an extended contact area, which means the toner adheres to the media – not your fingers.*



# Versatility that makes work easier.



Print



Copy



Scan



Email



Fax

**Flexible to fit your needs.**

**These copiers and multifunctions are great at adapting to change. If your business grows, they can grow with you. Modularity of design makes it easy to upgrade or customize with more powerful features and functionality – you've got plenty of options.**

- Started off with a CopyCentre digital copier and need more functionality? No problem. You can upgrade to a WorkCentre Pro advanced multifunction system.
- Rather just add on features? You can do that too. Choose flexible fax options including PSTN fax; versatile scan options including e-mail; or other options including additional memory, USB printing or enablement for accounting and vend devices.

## Advanced finishing and paper handling options

Produce professional documents in-house quickly and easily. Our finishers eliminate the effort and expense of collation, folding, and stapling by doing it for you.



**Office Finisher** provides 50-sheet multi-position stapling.



**Advanced Office Finisher** offers increased finishing capacity, 50-sheet multiposition stapling, and hole punch.



**Professional finisher** adds finishing capacity, saddle-stitched booklets, V-fold brochures, plus stapling and hole punch.



**Sort and collate**  
Save valuable time



**Stapling**  
Multiple position and placement to enhance usability



**Hole punch**  
Options meet worldwide conventions



**Folding**  
V-fold brochures are printed, folded and ready for distribution



**Booklet**  
Saddle-stitch booklets inhouse to reduce costs and eliminate delays

Three tray configurations are available. All offer an array of media and size choices and automatic paper selection.

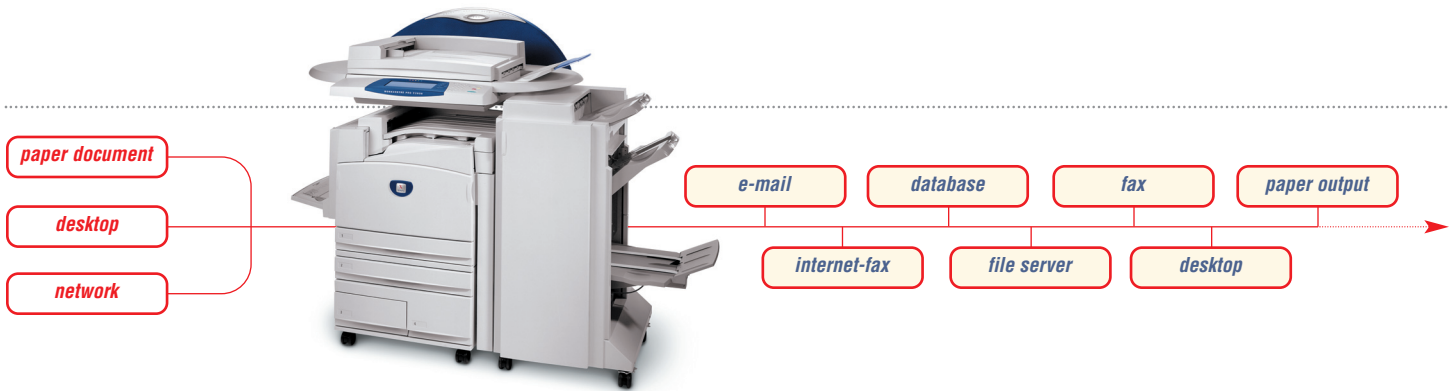
- If you're printing a lot, why keep reloading paper or switching media in the trays? Both CopyCentre or WorkCentre Pro offer tray options that support 1,140 sheets, 2,180 sheets or 3,140 sheets.
- Our trays support a wide range of media – from heavyweight (up to 80 lb. Cover / 220 gsm in all trays) to tabloid-size paper. So if you're making a booklet, use a heavier cover to add impact. For knock-out performance and the most reliable feeding, try our full line of Xerox papers and printing media.



## Robust security features

**Security is always a concern. And we don't take any chances. We provide a host of standard and optional security features that let you restrict access, track usage and protect your data.**

- Image Overwrite Protection deletes image on hard drive after job is completed.
- Network Authentication restricts access to scan, e-mail or server fax features.
- Secure Print and Secure Fax holds jobs until an authorized user releases them for printing.
- NIAP Common Criteria Certification meets international IT security standards.



## Go from paper to digital to anywhere

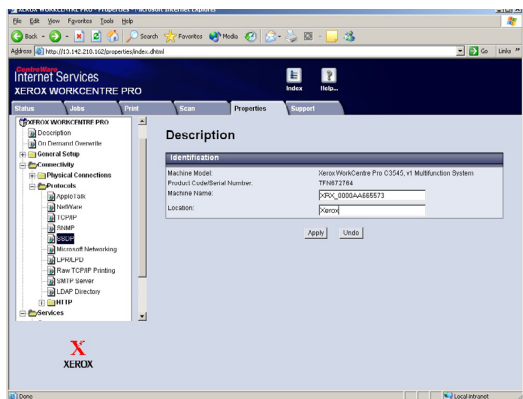
When it comes to workflows, there's even more versatility and options. You can convert paperwork to digital files. Then distribute them anywhere – in any format. Or just store them on the network for your next big meeting. It's up to you.

- Scan to PC desktop, network file server, document management system, e-mail, fax, or to almost any other destination with high-quality, ultra-compressed color, gray scale or black-and-white.
- Internet and e-mail network capabilities allow immediate delivery to numerous recipients worldwide, efficiently and inexpensively.
- E-mail integration with your servers allows easy search of e-mail addresses when distributing a document.
- CentreWare Scanning Services software converts, distributes and routes scanned documents to where they're needed, in whatever format required.

## Network device management tools

Keeping control of your network is easy.

We give you everything you need to manage and monitor your networked devices.



- Xerox CentreWare® software, for example CentreWare Web, simplifies installation and network administration and provides quick access to device and job status, accounting information and more.
- Built-in Web pages allow you to manage, configure and troubleshoot devices from anywhere using a web browser.
- Telephone fax is available for your CopyCentre and WorkCentre Pro to enable traditional fax workflows.
- Choose internet fax to avoid costly long distance charges and busy signals by sending documents via the network.
- And, fax server integration eliminates the need for dedicated phone lines by leveraging a network fax server.

## Leverage your investments

By exploring our versatile fax options you can choose the fax solution that makes the most of your investment.

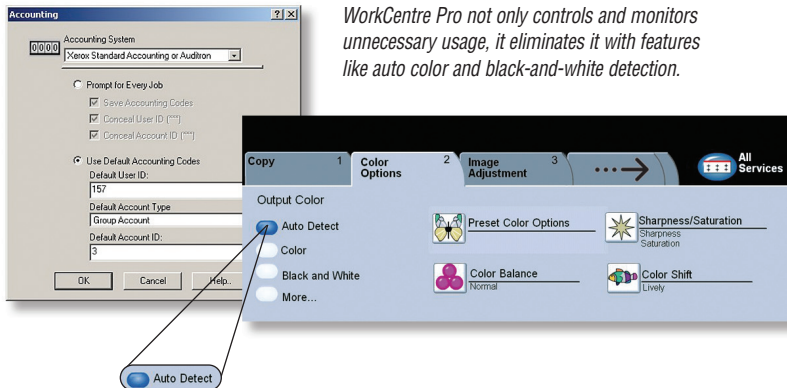
## More integrated value-added solutions

Flexible, open architecture allows easy integration with leading third-party software developers. An array of Xerox Business Partner solutions are available to enhance the functionality of your Xerox multifunction system, including:

- Faxing. Integrate network fax capabilities, including desktop control, to increase your efficiency and save money.
- Accounting. Streamline and digitize processes such as billing, identify savings opportunities, find new sources of value, and simplify work processes.
- Scanning. Provide digital safeguarding to allow scan and secure transmission of highly sensitive documents by fax or e-mail.

# Black-and-white performance and features.

## Plus, convenient color.



*WorkCentre Pro not only controls and monitors unnecessary usage, it eliminates it with features like auto color and black-and-white detection.*

## Command attention with color

Use it a little – or a lot. But most importantly, use color when it counts. To add impact to critical document. Or to help readers retain information. It's a powerful feature. And it can dramatically increase your effectiveness in business situations.

### Color makes perfect business sense

Enjoy all the features of traditional black-and-white devices – with the added bonus of color. We make color selectable only when you need it. You'll find color on CopyCentre and WorkCentre Pro to be much less expensive—and faster—than a typical inkjet printer or taking the job to offsite copy shops.

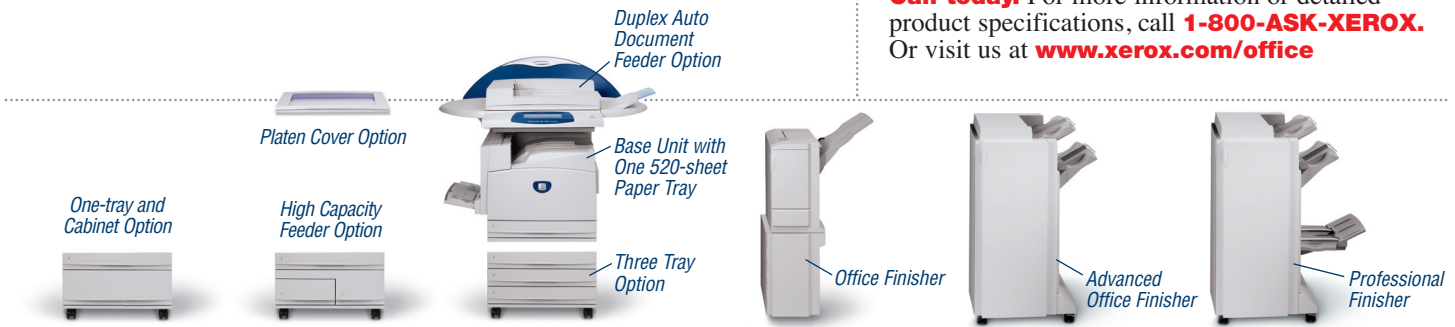
- You can create cost efficiencies by doing most of your copying and printing in black-and-white.
- You're only charged for color when you use color. Individual color pages within a document are charged at the color rate – everything else at the black-and-white rate.
- Black-and-white print costs are comparable to other monochrome systems in this speed range.
- Access to color options can be password protected or granted to specific groups – so you're in control of who uses it.
- Internal Auditor limits, tracks usage, and generates reports of walkup copy and print features.

- Studies show motivation and response to sales messages increases up to 80% when featured in color.
- 75% of companies with in-house color capability say they would feel inconvenienced without it.
- 83% of business professionals believe color in logos and presentations makes them appear more successful.
- Readership and message recall increase by 80% when color is used to highlight key information.





**Call today.** For more information or detailed product specifications, call **1-800-ASK-XEROX.** Or visit us at **www.xerox.com/office**



CONFIGURATIONS	CopyCentre® C2128	CopyCentre® C2636	CopyCentre® C3545	WorkCentre® Pro C2128	WorkCentre® Pro C2636	WorkCentre® Pro C3545
<b>Speed</b> (black-and-white / color)	28 / 21 ppm	36 / 26 ppm	45 / 35 ppm	28 / 21 ppm	36 / 26 ppm	45 / 35 ppm
Maximum Duty cycle	Up to 135,000 pages per month depending on model					
<b>Paper Handling</b>						
Paper input	50-sheet Duplex Automatic Document Feeder, 100-sheet Bypass Tray, 520-sheet Paper Tray <b>One Tray Module with Cabinet option (Total 1,140 sheets):</b> Adds one 520-sheet Paper Tray <b>Three Tray Module option (Total 2,180 sheets):</b> Adds three 520-sheet Paper Trays <b>High Capacity Feeder option (Total 3,140 sheets):</b> Adds one 520-sheet Paper Tray and two Trays with total 2,000-sheet capacity					
Paper output	Standard	400-sheet Offsetting Center Catch Tray (200 sheets with finisher option)				
	Optional	<b>Office Finisher:</b> 1,000-sheet stacker, 50-sheet multi-position stapling <b>Advanced Office Finisher:</b> 3,000-sheet stacker and 500-sheet top tray, 50-sheet multi-position stapling and hole punch <b>Professional Finisher:</b> 1,500-sheet stacker and 500-sheet top tray, 50-sheet multi-position stapling and hole punch, saddle-stitch booklet maker, V-fold brochure maker				
<b>Copy</b>						
Pre-collation memory	256 MB plus 30 GB hard disk drive					
First page out time	6.1 seconds black-and-white / 8.5 seconds color					
Copy Resolution	600 x 600 dpi					
Copy Features	Auto duplex, color touch screen interface, electronic pre-collation, automatic tray selection; build job, negative/mirror image, automatic booklet creation, multi-up, auto RE, mixed-size originals, auto registration, covers insertion, sample set, bound copying, store and recall job programming					
<b>Print</b>						
Print Resolution	NA			600 x 600 dpi, 1200 x 1200 dpi <sup>1</sup>		
Processor / PDL	NA			733 MHz Intel® Celeron® / PostScript 3 & PCL 5c emulations		
Connectivity	NA			10/100 BaseT Ethernet, 10Base2, 10Base5 (via adapter), USB (optional), Wireless Ethernet 802.11b (via third-party adapters)		
Print Features	Secure print, delay print, sample set, booklet creation, cover selection, paper selection by attribute, multi-up, watermark, banner sheets, image quality, fit to new paper size, transparency interleave, output tray selection, store and recall driver settings					
<b>Fax</b>						
Fax Options	Walkup fax (33.6 Kbps, one-line and two-line options)			Walkup Fax, Network Server Fax, Internet Fax		
<b>Scan</b>						
Scan Options	NA			Scan-to-E-mail, Network Scanning with E-mail, Scan to PC Desktop, CentreWare Scanning Services, Various Xerox Business Partner Solutions		
<b>Other Options</b>	Foreign Device Interface, Image Overwrite Security			Foreign Device Interface, Image Overwrite Security, Network Accounting Enablement, Memory Upgrade		

## Unrivaled service and support.

Behind every Xerox product is a large network of customer support that's unrivaled in the industry and available when you need it. Xerox service professionals use leading-edge technologies to keep you up and running. They're even linked to the engineers who designed your product, so you can be confident when you choose Xerox. And genuine Xerox supplies are always easily available.

## Total satisfaction guaranteed.

The exclusive Xerox Total Satisfaction Guarantee, recognized as unique in the industry, covers every Xerox WorkCentre® which has been continuously maintained by Xerox or its authorized representatives under a Xerox warranty or Xerox maintenance agreement. You decide when you're satisfied.

<sup>1</sup> 1200 x 1200 dpi not supported on 11 x 17 in. paper

© 2004 XEROX CORPORATION. All rights reserved. XEROX® The Document Company®, the digital X®, WorkCentre® and CopyCentre® are trademarks of or licensed to XEROX CORPORATION. In support of Xerox's environmental leadership goals, these models may contain some recycled components that are reconditioned. Support Center Practices (SCP) Certification is a registered trademark of Service Strategies Corporation. ENERGY STAR® is a U.S. registered mark. As an ENERGY STAR® Partner, Xerox Corporation has determined that these products (WorkCentre Pro 2128, WorkCentre Pro 2636 and WorkCentre Pro 3545) meet the ENERGY STAR® guidelines for energy efficiency. Terra Choice Environmental Services, Inc., of Canada has verified that these products conform to all applicable Environmental Choice EcoLogo requirements for minimized impact to the environment. Product information and/or specifications are subject to change without notice. Printed in U.S.A. 10/04, 9/05, 3/07 610P720250C W45BR-01UD

