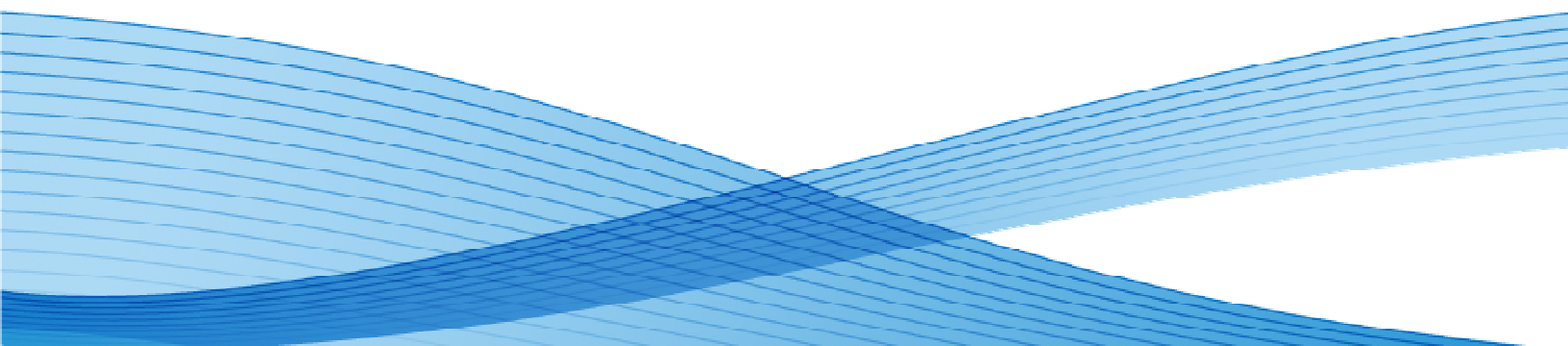


ColorQube[®] 8570 vs. Phaser[®] 8560 Product Comparison

Table of Contents

October 19, 2010

2	Introductions
2	Configurations
2	Upgrading
2	Security
3	Printing
4	Certificates and Compliance
4	Device Administration and Management
5	Device Cloning
5	Product Differences Table



ColorQube 8570 vs. Phaser 8560 Comparison

Introduction

The ColorQube 8570 is the latest generation of the Xerox desktop solid ink printer product line. For firms with less than 500 employees, the ColorQube 8570 color printer is the easiest and more reliable way to produce the high quality color printers, everyday. This product offers a number of enhancements over the Phaser 8560, including:

- Improved maximum print speeds (from 30 ppm to 40 ppm)
- 3rd optional paper tray increases max paper capacity to 2,200 pages
- Feeds heavy media from all trays (not just MPT)
- Earth Smart driver settings
- Color By Words, now with support for French, Italian, German and Spanish
- New ink formulation that reduces warm-up times
- Reduced energy consumption of 40 %

This paper is intended to provide a technology overview to help field personnel and IT organizations to understand the similarities and differences between these two products. It is also intended to help minimize accreditation efforts so you can more quickly, and cost effectively, introduce the new features and functionality offered by the ColorQube 8570 to enhance your customer's work environment.

This paper outlines additional features as well as the degree of change in each of the functional areas of the device compared to the Phaser 8560.



Configurations

The ColorQube 8570 includes 3 configurations

- ColorQube 8570N – Network connectivity, 625-sheet capacity, 512 MB RAM
- ColorQube 8570DN – Adds duplexing to 8570N
- ColorQube 8570DT – Adds additional paper tray (1,150-sheet capacity) to 8570DN

Upgrading

Any future firmware upgrades will be posted on xerox.com under the Support and Drivers section. Download the file directly from this location.

Security

No changes from the Phaser 8560 to the 8570.



ColorQube 8570/N



ColorQube 8570/DN



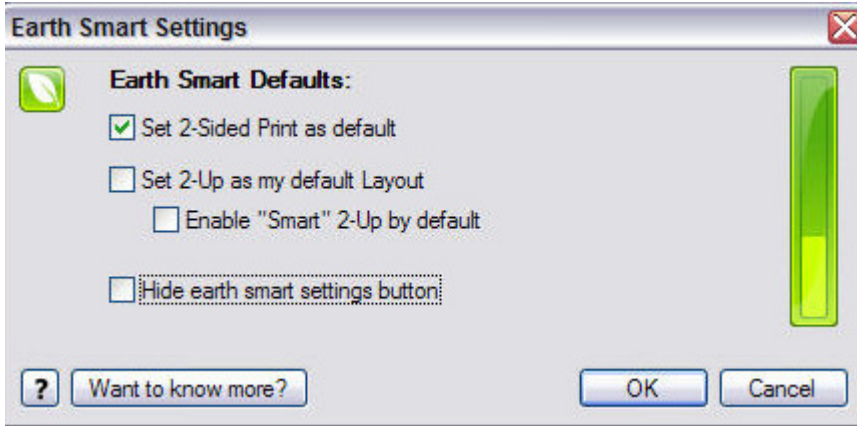
ColorQube 8570/DT

ColorQube 8570 vs. Phaser 8560 Comparison

Printing

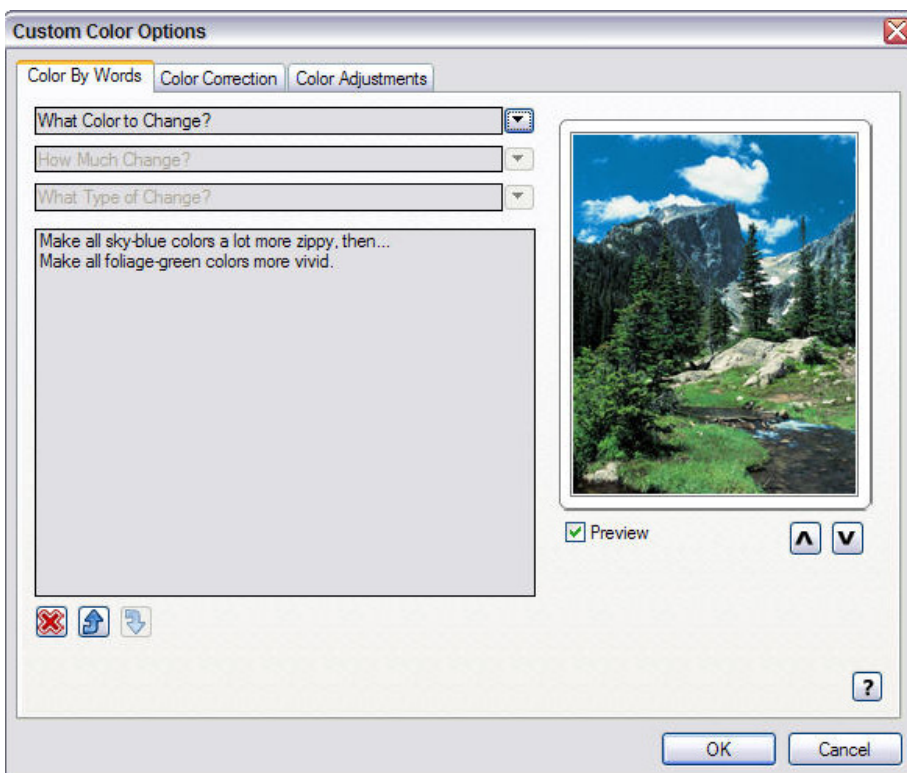
Earth Smart Print Drivers

The Earth Smart feature allows environmentally friendly features like 2-sided printing (duplex-enabled configurations) and 2-up layout, to be easily accessible in a single pop-up window.



Color by Words

Color by Words is a breakthrough color-matching technology that answers the customers' need for color accuracy. Users can select from a unique menu of words, such as "red apple," "blue sky" or "green grass," to fine tune the colors they desire. With Color by Words, everyone from a graphic designer to the part-time PowerPoint warrior can get the right color and vibrant prints the first time.



Color By Words

Original photo not right? Use the Color By Words drop-down list and choose "yellow-green colors a lot more green," and "red colors a lot more saturated." Picture-perfect results.

ColorQube 8570 vs. Phaser 8560 Comparison

Certificates and Compliance

The ColorQube 8570 satisfies the new Energy Star II requirements for the 8570 DN and DT models.

All print drivers have passed Microsoft WHQL driver certification, Adobe, and Pantone certifications.

Device Administration and Management

The ColorQube series includes help pages embedded into your Xerox device so that common reference data and instructions are always at your fingertips. No need to search for the instruction manual, just print them out at your convenience. These helpful pages include:

Configuration Report

Current configuration of the device including feature settings and version numbers.

Paper Tips

- General guidelines on paper handling, types of paper, etc for best operation of your Xerox product
- Paper Tray setup and configuration instructions
- Bypass Tray usage

Troubleshooting Print Quality

Instructions for how to solve common image quality problems without having to call for customer service

Supplies Usage

- Lists the Consumable (such as solid ink) and Routine Maintenance Items (such as drum maintenance kit) for your Xerox product
- Provides current levels, part numbers, date installed, number of estimated pages remaining for each item
- Graphically details the locations of all Consumables and Maintenance Items for your particular product configuration

Office Demo Page

A page that demonstrates the high quality printing of your Xerox product on typical office documents.

Graphics Demo Page

A page that demonstrates the high quality printing of your Xerox product on typical graphic and image documents.

2-Sided Demo Page

A page that demonstrates printing on both sides of a sheet of paper

PCL Font List

A complete listing of all PCL fonts that are supported by your Xerox product.

PostScript Font List

- A complete listing of all PostScript fonts that are supported by your Xerox product.
- The information is accessible either at the device or via the device's internal web page.

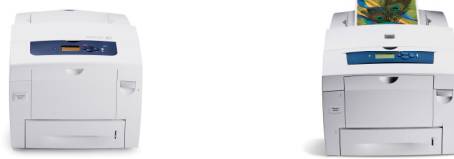
ColorQube 8570 vs. Phaser 8560 Comparison

Device Cloning

Close printer features function in the internal CentreWare Internet Services (CWIS) can clone many of the features from the Phaser 8560 to the ColorQube 8570.

ColorQube 8570 / Phaser 8560 Product Differences Table

(Light blue highlights are noted product improvements)



	ColorQube® 8570	Phaser® 8560
Configuration Features	N (Base)	N (Base)
Machine Speed (Letter/A4)	40 ppm	30 ppm
Background		
Mfr's Max Monthly Volume	85,000	85,000
Recommended Monthly Volume	Up to 8,000	Up to 8,000
Warranty	1 year	1 year
General Specifications		
Technology	Solid Ink	Solid Ink
Processor/bits/MHz	Motorola PowerPC Integrated Processor, 1 GHz (FreeScale PowerPC 8533)	FreeScale PowerPC 8542 Integrated Processor 600 MHz
Standard memory	512 MB	256 MB
Maximum memory	2 GB	1 GB
Hard disk Drive	Optional 160 GB (Included in the Productivity Kit)	Optional minimum 40 GB
Max mono ppm	40 ppm	30 ppm
Max color ppm	40 ppm (Up to 40 ppm. Default print speed of 20 ppm)	30 ppm
FPOT - Cold start	12 minutes	12 minutes
FPOT - Power save (sleep)	2 minutes	4 minutes
FPOT - Low power	30 seconds	30 seconds
FPOT - Quiet warm-up	10 seconds	10 seconds
FPOT - Click to print	5 seconds	5 seconds
Power save settings	30 - 240 minutes (Default 30 minutes)	30 - 240 minutes
Automatic duplex	Optional (N), Standard (DN/DT)	Optional (N), Standard (DN/DT)
Qwerty keypad	No	No
UI panel - Size/type	124 x 64 FSTN Active Area (AA): 53.745(w) x 26.865(h) mm; Viewing area (VA): 57.0 (w) x 30.0 (h) mm	124 x 64 FSTN Active Area (AA): 53.745(w) x 26.865(h) mm; Viewing area (VA): 57.0 (w) x 30.0 (h) mm
UI/menu behavior (coherence)	Xerox coherence	Xerox coherence

ColorQube 8570 vs. Phaser 8560 Comparison



	ColorQube® 8570	Phaser® 8560
Configuration Features	N (Base)	N (Base)
Machine Speed (Letter/A4)	40 ppm	30 ppm
Interface / Connectivity		
Supported Operating Systems		
Windows 7, Vista	Yes	Yes
Windows 98	No	No
Windows 2000	No (per Microsoft)	No (per Microsoft)
Windows 2003 Server	Yes	Yes
Windows 2008 Server	Yes	Yes
Windows NT 4.0	No	No
Windows ME	No	No
Windows XP SP1 (Requires XP SP1)	Yes	Yes
Mac OS 8, 9	No	No
Mac OS 10.5 +	Yes	Yes
	(Limited support for 10.4 and below (10.3 - PPMD driver support, 10.4 legacy driver support))	
Unix	Yes	Yes
	(Xerox CentreWare Unix, Unix Drivers (Solaris 8, 9, 10), HPUX (11.0, 11iv2), AIX 5I v5.3, Linux Fedora Core (1, 5, 6-13), RedHat Enterprise Linux 4, SUSE (10.x, 11.x))	
Supported Network Protocols (IPv4)	SMTP, IPP, Secure IPP, HTTP, HTTPS, Port9100, LPD, DDNS, mDNS, Apple Bonjour, SLP, DHCP, Auto-IP, WINS, SNMPv3, SSDP	SMTP, IPP, Secure IPP, HTTP, HTTPS, Port9100, LPD, DDNS, mDNS, Apple Bonjour, SLP, DHCP, Auto-IP, WINS, SNMPv3, SSDP
Supported Network Protocols (IPv6)	DHCPv6, HTTP, HTTPS, Port9100, LPD, IPP, Secure IPP, MLDv2, ICMPv6, IPsec	DHCPv6, HTTP, HTTPS, Port9100, LPD, IPP, Secure IPP, MLDv2, ICMPv6, IPsec
Other	IPX/SPX, Netware NDS, Bindery, NCP, SAP, EtherTalk	IPX/SPX, Netware NDS, Bindery, NCP, SAP, EtherTalk
Supported Network Protocols (Security)	SSLv3, IPSec, 802.1x for wired networks, HTTPS, IPPS, SMTP Authentication, IP Filtering	SSLv3, IPSec, 802.1x for wired networks, HTTPS, IPPS, SMTP Authentication, IP Filtering
Wireless	Optional: 802.11 b, g	Optional: 802.11 b, g
Connectivity		
Parallel	No	No
10BaseT Interface	Yes	Yes
100BaseT Interface	Yes	Yes
1000BaseT Interface	Yes	No
USB 2.0	Yes	Yes
802.1x Authentication	Yes	Yes
Optional Interfaces		
Internal Wireless	No	No
External Wireless	Optional	Optional
Machine Speed		
Color / Mono ppm		
Max Speed fast color	40 ppm	30 ppm
Max Speed fast color duplex	30 ppm	20 ppm
Max Speed Standard mode	30 ppm	24 ppm
Max Speed Standard mode duplex	26 ppm	18 ppm
Max Speed Enhanced mode	19 ppm	16 ppm
Max Speed Enhanced mode duplex	18 ppm	13 ppm
Max Speed Photo mode	6 ppm	10 ppm
Max Speed Photo mode duplex	6 ppm	8 ppm

ColorQube 8570 vs. Phaser 8560 Comparison



	ColorQube® 8570	Phaser® 8560
Configuration Features	N (Base)	N (Base)
Machine Speed (Letter/A4)	40 ppm	30 ppm
Paper Handling		
Multipurpose / Bypass Tray Capacity	100 sheets of 20 lb. Bond	100 sheets of 20 lb. Bond
Paper Weight	16 to 40 lb. Bond - 50 to 80 lb. Cover (60 to 220 gsm)	16 to 40 lb. Bond - 50 to 80 lb. Cover (60 to 220 gsm)
Paper Size	Tray 1: Letter, A4, Executive, B5 JIS, B5 ISO, A6, 3x5 Index Card, Statement, A5, Folio and Legal Envelopes: US#10, C5, DL, Monarch, A7, US #6 ¾, US 5 ½ Baronial, US 6x9, Japanese Choukei 3 Gou, Japanese Choukei 4 Gou	Tray 1: Letter, A4, Executive, B5 JIS, B5 ISO, A6, 3x5 Index Card, Statement, A5, Folio and Legal Envelopes: US#10, C5, DL, Monarch, A7, US #6 ¾, US 5 ½ Baronial, US 6x9, Japanese Choukei 3 Gou, Japanese Choukei 4 Gou
Paper Type	Bond, Business card stock, Card stock, Coated, Cover, Duradocument Paper, Envelopes, Greeting card stock, Heavyweight, Hole punched, Index card stock, Labels, Letterhead, Lightweight, Photo paper, Plain paper, Preprinted forms, Recycled paper, Transparencies, Tri-fold brochure paper	Bond, Business card stock, Card stock, Coated, Cover, Duradocument Paper, Envelopes, Glossy, Greeting card stock, Heavyweight, Hole punched, Index card stock, Labels, Letterhead, Lightweight, Photo paper, Plain paper, Preprinted forms, Recycled paper, Transparencies, Tri-fold brochure paper
Standard Tray Information		
# Standard Trays	1 (N/DN) 2 (DT)	1 (N/DN) 2 (DT)
# Optional Trays	3 (N/DN) 2 (DT)	2 (N/DN) 2 (DT)
Paper Capacity per Tray	525	525
Media Weight	16 to 32 lb. Bond (60 to 220 gsm)	16 to 32 lb. Bond 22 to 45 lb. Cover (60 to 120 gsm)
Paper Type	Plain Paper, Punched, Envelopes, Transparencies, Labels, Card/cover, glossy	Bond, Business card stock, Card stock, Duradocument Paper, Glossy, Labels, Letterhead, Photo paper, Plain paper, Recycled paper, Transparencies, Tri-fold
Paper Size	Tray 2-5: Legal, Folio, A4, Letter, Executive, B5 JIS, B5 ISO, Statement, A5 Envelopes: US#10, C5, DL Minimum Size (Custom): 3.9 x 8.3 in. Maximum Size (Custom): 8.5 x 14 in.	Tray 2-5: Brochure paper, Legal, Folio, A4, Letter, Executive, B5 JIS, B5 ISO, Statement, A5 Envelopes: US#10, C5, DL Minimum Size (Custom): 3.9 x 8.3 in. Maximum Size (Custom): 8.5 x 14 in.
Duplex Paper Size	Plain paper, Envelopes, Transparencies, Labels, Card/Cover, Glossy	Plain paper, Envelopes, Transparencies, Labels, Card/Cover, Glossy
Paper Input Capacity		
Standard # Paper Sources	2	2
Maximum # Paper Sources	5	4
Standard Paper Capacity	625	625
Maximum Paper Capacity	2,200	1,675
Minimum Size	3 x 5 in.	3 x 5 in.
Maximum Size	8.5 x 14 in.	8.5 x 14 in.
Maximum Print Area (W x L)	5 mm from edge of paper	5 mm from edge of paper
Media Weight	16to 58 lb. (60 to 220 gsm)	16to 58 lb. (60 to 220 gsm)
Tray Bypass option (Makes MPT the priority if Bypass is turned on)	Yes	Yes



ColorQube 8570/DT shown with 1 extra tray



ColorQube 8570/DT shown with 1 extra tray

ColorQube 8570 vs. Phaser 8560 Comparison



	ColorQube® 8570	Phaser® 8560
Configuration Features	N (Base)	N (Base)
Machine Speed (Letter/A4)	40 ppm	30 ppm
Paper Output		
Standard # of Output Areas	1	1
Maximum # of Output Areas	1	1
Standard Output Capacity	350	350
Other Output	No	No
Automatic Duplexing	DN, DT only	DN, DT only
Print Specifications		
Maximum Engine Resolution	up to 600 dpi	up to 600 dpi
Maximum Enhanced Resolution	2400 FinePoint™	2400 FinePoint™
Print Modes: PostScript	Fast Color: 225 x 400 Standard: 300 x 450 Enhanced (default): 525 x 450 Photo: 525 x 2400	Fast Color: 225 x 400 Standard: 300 x 450 Enhanced (default): 525 x 450 Photo: 525 x 2400
Print Modes: PCL	Standard PCL (default) 600 x 400 Enhanced PCL 600 x 600	Fast PCL: 300 x 600 PCL (default) 600 x 600
Print Drivers		
Microsoft Windows 2000	Yes	Yes
Microsoft Windows 2003 Server	Yes	Yes
Microsoft Windows 2008 Server	Yes	Yes
Microsoft Windows XP, XP Professional	Yes	Yes
Microsoft Windows Vista	Yes	Yes
Mac 8, 9	No	No
Mac OS X 10.3+	Yes	Yes
Sun Microsystems Solaris 9	Yes	Yes
Sun Microsystems Solaris 10	Yes	Yes
Linux Red Hat Enterprise 4	Yes	Yes
Fedora Core 1, 5	Yes	Yes
SUSE 10.x, 11.x	Yes	Yes
IBM AIX 5	Yes	Yes
HP-UX 11.0/11i	Yes	Yes
Novell NetWare 5.x, 6.x Open Enterprise Server	Yes	Yes
Xerox Global Print Driver	Yes	Yes
Xerox Mobile Express Driver	Yes	Yes
#/Type Fonts (PCL / PS)	136 PS / 93 PCL (adding Greek to PCL)	136 PS / 93 PCL
PDLs/Emulations:	PS3, PCL 5c, PDF	PS3, PCL 5c, PDF
Network Printing	Yes	Yes
Network Printing Protocols	TCP/IP (v4 or v6), LPR, IPP, Port 9100, Secure IPP	TCP/IP (v4 or v6), LPR, IPP, Port 9100, Secure IPP
Direct Connect Printing	Yes	Yes
Halftone	256 levels (same for all programs)	256 levels (same for all programs)
Direct PDF Printing	Yes (requires hard drive)	Yes (requires hard drive)
XPS Printing	Yes (Client Side Driver)	Yes (Client Side Driver)
Native TIFF Printing	No	No
Hard Disk Overwrite	Yes (with Optional Hard Drive)	Yes (with Optional Hard Drive)

ColorQube 8570 vs. Phaser 8560 Comparison



	ColorQube® 8570	Phaser® 8560
Configuration Features	N (Base)	N (Base)
Machine Speed (Letter/A4)	40 ppm	30 ppm
Print Drivers (Continued)		
Print Mgmt Software:	Yes (IBM plug ins; Tivoli)	Yes (IBM plug ins; Tivoli)
Duplex Print	Yes	Yes
USB Host	No	No
Print Features		
IPP (Web) Support:	Yes	Yes
Collation:	Yes	Yes
AMR	No	No
ASR	No	No
Bi-Di driver	Yes	Yes
PhaserSmart®	Yes	Yes
PrintingScout®	Yes	Yes
Print submission tools	Yes	Yes
Edge to edge printing	No (within the 5 mm)	No
Secure Print	Yes	Yes
Personal Print (requires a Hard Drive)	Yes	Yes
SMart Duplex (requires a Hard Drive)	Yes	Yes
Beacon Installer	Yes	Yes
Walk-up printing	Yes	Yes
Xerox Universal Driver	Yes	Yes
GreenPrint software	Yes	Yes
Earth Smart driver settings	Yes	No
Color By Words	Yes	No
Security		
Secure HTTPS (SSL)	Yes	Yes
IPsec	Yes	Yes
Secure LDAP	No	No
Removable Hard Drive (no tools req.)	Optional	Optional
802.1x Authentication	Yes	Yes
IPv6 Compatibility	Yes	Yes
Network Authentication	No	No
SNMPv3	Yes	Yes
Image Overwrite	Yes	Yes
Configurable Disk Overwrite (Latent Image Overwrite)	Yes	Yes
Fax Isolation (Hard Drive)	N/A	N/A
Audit Log	Yes	Yes
Xerox Secure Access	Yes	Yes
CAC	No	No
Port Control (USB Port Enable/Disable)	Yes	Yes
Biometrics	No	No
HTTPS	Yes	Yes
IP Filtering	Yes	Yes
Smart Cards	No	No

ColorQube 8570 vs. Phaser 8560 Comparison



	ColorQube® 8570	Phaser® 8560
Configuration Features	N (Base)	N (Base)
Machine Speed (Letter/A4)	40 ppm	30 ppm
Solutions		
Accounting		
Xerox Standard Accounting	No	No
Job Accounting	Yes	Yes
Device Management		
Xerox CentreWare Internet Services	Yes	Yes
Remote UI (Like HP)	No	No
Remote Driver Install (via Web) Phaser Like	Yes (Web Pointer)	Yes (Web Pointer)
Customizable Defaults	Yes	Yes
Administrative Protocols	SNMPv3	SNMPv3
Xerox CentreWare Web	Yes	Yes
WebJet Admin Interface	Yes (only through standard SNMP MIBS)	Yes (only through standard SNMP MIBS)
Tivoli	Yes	Yes
Rendevous	Yes	Yes
MMC	No	No
Device Discovery	Rendevous (Bonjour), SLP, SSDP, SAP	Rendevous (Bonjour), SLP, SSDP, SAP
Print Queue Viewing	No	No
Browsers	IE6, IE7, Firefox 2.x, Firefox 3.x	IE6, IE7, Firefox 2.x, Firefox 3.x
ASR	No	No
AMR	No	No
Low Ink Alert (via email)	Yes (alert over SNMP)	Yes (alert over SNMP)
Proactive Supplies Management	Yes	Yes
Supported Solutions		
Network Accounting Enablement	Yes	Yes
Additional Information		
Universal Power Supply Requirements		
Power Requirements (V/Hz/Amps)	100 - 240 VAC 50/60 Hz 12-6 A	100 - 240 VAC 50/60 Hz 12-6 A
Power Consumption Peek	NTE 1.5 KW	NTE 1.5 KW
Power Consumption (avg operations)	Fast Color: 288 W (115v) / 291 W (230v) Standard: 287 W (115v) / 264 W (230v) Enhanced: 252 W (115v) / 243 W (230v) Photo: 189 W (115v) / 175 W (230v)	Fast Color: 402 W (115v) / 533 W (230v) Standard: 330 W (115v) / 332 W (230v) Enhanced: 330 W (115v) / 339 W (230v) Photo: 265 W (115v) / 269 W (230v)
Power Consumption (Standby)	104 W	124 W
Power Consumption (Power Save - Sleep Mode)	45 W	48 W

ColorQube 8570 vs. Phaser 8560 Comparison



	ColorQube® 8570	Phaser® 8560
Configuration Features	N (Base)	N (Base)
Machine Speed (Letter/A4)	40 ppm	30 ppm
Additional Information (Continued)		
Other		
Noise Level Printing (Enhanced)	< 59 dBA	< 56 dBA
Noise Level Standby	< 24 dBA	< 31 dBA
Operating Temperature (min/max)	50-90 F / 10-32 C	50-90 F / 10-32 C
Humidity (min/max)	10-80 %	10-80 %
Storage and Shipping Humidity range (mid/max)	10-95 % RH non-condensing	10-95 % RH non-condensing
Operating Altitude	0 - 3,200 meters	0 - 2,438 meters
Shipping Altitude	0 - 15,000 meters	0 - 15,000 meters
Compliance / Certifications		
508 Compliance	Yes	Yes
Blue Angel	No	No
Energy Star II	No (N) Yes (DN/DT) (The machine is certified that it will automatically switch to a Power Saver mode after an idle period. Must ship with duplex as default)	Energy Star I
UL/CSA	Yes	Yes
CE/EC/EMC	Yes	Yes
WHQL Certification	Yes	Yes
Common Criteria Certification	No	No
Citrix Ready	Yes	Yes
HP WEB Jet Admin	Yes	Yes
IPV6 DOD	Yes	Yes
Pantone	Yes	Yes
What's in the Box		
Quick Install Guide	Yes	Yes
Quick Use Guide	Yes (110V: 2 sets / 220V: 5 sets)	Yes
Software and Documentation CD	Yes	Yes
User Manual (Located on the Software and Documentation CD)	Yes	Yes
System Admin Guide (SAG) (Web only)	Yes	Yes
Software and Documentation CD	Yes	Yes
Worldwide Warranty	Yes	Yes
Starter Ink (CMYK)	3,000 pages	2,600 pages
Power Cable	Yes	Yes
Consumables / Supplies		
Xerox ColorQube Ink - CMY # Sticks	2	3
Yield	4,400	3,400
Coverage (Average Continuous Composite CMY)	ISO/IEC 24711	ISO/IEC 24711

ColorQube 8570 vs. Phaser 8560 Comparison



	ColorQube® 8570	Phaser® 8560
Configuration Features	N (Base)	N (Base)
Machine Speed (Letter/A4)	40 ppm	30 ppm
Consumables / Supplies (Continued)		
Xerox ColorQube Ink - K		
# Sticks	2	3
Yield	4,300	3,400
Coverage	ISO/IEC 24711	ISO/IEC 24711
# Sticks	4	6
Yield	8,600	6,800
Coverage	ISO/IEC 24711	ISO/IEC 24711
Maintenance Kit (DMU)		
Standard-Capacity Yield	10,000	10,000
Extended-Capacity Yield	30,000	30,000
Waste Tray		
Cleaning Kit		
Options		
Replacement Paper Tray (Customer Install Capable)	Yes	Yes
525-Sheet Feeder (Customer Install Capable)	Yes	Yes
System Cart with Storage Drawer (Customer Install Capable)	Yes	Yes
512MB RAM	Yes	Yes
Productivity Kit with Hard Drive (Customer Install Capable)	Yes (160 GB)	Yes
Network Accounting Enablement (Customer Install Capable)	Yes (Port of Base Firmware)	Yes
N to DN Upgrade (Customer Install Capable)	Yes (N configuration only)	Yes (N configuration only)



Solid Ink with Packaging



System Cart with Storage Drawer