

XEROX[®]

Technology | Document Management | Consulting Services

Phaser[®] 7400



colour printer

Xerox Phaser[®] 7400

Evaluator Guide



ABOUT THIS GUIDE

This guide will introduce you to the Xerox Phaser 7400 Colour Laser Printer and help you in your printer evaluation process.

CONTENTS

Section 1

Product Overview	1
Configurations	2

Section 2 – Evaluating Tabloid Colour Laser Printers

Suggests specific features to look for in a printer of this class, how to evaluate that feature, and how the Phaser 7400 measures up

Speed	4
Value	5
Versatility	6
Ease of Use	7

Section 3

Configuration Summary & Options	12
Consumables and Maintenance Items	13
Media Supported	13
Print Quality Modes	14
TekColor Corrections	14
Specifications	14
Information Sources	15

SECTION 1

Product Overview

The Xerox Phaser® 7400 Colour Laser Printer combines superior speed with great value and flexibility to set a new standard for business colour and black and white printing capability.

Superior Speed

The Phaser 7400 colour printer is one of the fastest in its class, with colour print speed up to 36 ppm and black and white print speed up to 40 ppm. But speed is more than a fast print engine. 256 MB of standard memory allows the Phaser 7400 to RIP and pipeline multiple jobs without creating a bottleneck. Workgroup efficiency is further enhanced with a first-page-out time as fast as 12 seconds in colour and 11 seconds in black and white. The 800 MHz processor provides fast RIP processing for all standard office applications. True Adobe® Postscript® 3™ and a strong image processor provide excellent system throughput. And finally, Intelligent Features like automatic tray selection, automatic tray switching and an automatic thickness sensor assure that the job is done right the first time - avoiding costly delays and reprints.

Outstanding Value

The Phaser 7400 colour printer is our most feature packed A3 colour printer ever, offered at the lowest price ever. The low purchase price combined with low cost per page makes the Phaser 7400 an attractive alternative to a high-end black and white only printer, or to a low-end colour copier. And by bringing print jobs in-house you can save more than enough to pay for the printer. That's economics that really add up.

Versatility

The Phaser 7400 colour printer extends A3 colour printing in the office to new levels. All trays handle media sizes from 101.6 x 152.4 mm up to 304.8 x 457.2 mm. Tray 1 can even print banners up to 304.8 x 1219.2 mm. And all trays can take media up to 80 lb Cover (216 gsm) and Tray 1 up to 100 lb. Cover (270 gsm). And the 7400DXF boasts a total capacity of 3000-sheets, from 6 different trays, for maximum flexibility and uninterrupted printing.

High volume applications will appreciate the finishing features available with the Phaser 7400. From job offset, to multiple hole punch and stapling options, all the way to V-fold booklet printing with saddle stitch stapling.

And you can be sure that output is correct with the colour confidence provided by the leader in office colour printing technologies. (TekColor Dynamic Colour Correction, ColorSync, Adobe® PostScript® Level 3™, PANTONE® certification, sRGB colour matching, and ICC/ICM support).



Phaser 7400DXF

Configurations



PHASER 7400N FEATURE SET

The Phaser 7400N comes with standard features not even available as options on many competitors.

- Up to 36 ppm in colour, 40 ppm black and white
- 800 MHz PowerPC image processor
- 256 MB memory, expandable to 1 GB
- True Adobe® PostScript® 3™
- Selectable print resolution; Standard, Enhanced, Photo
- 800 sheet input capacity
- Up to 304.8 x 457.2 mm media size and up to 100 lb Cover (270 gsm) media weight
- Common Printing Features:
 - Intelligent Ready
 - TekColor Colour Correction
 - Watermark printing
 - N-up Printing
 - Separation Pages
 - Cover Sheets
 - Automatic Tray Selection
- Extended Printing Features:
 - Embedded Web Server
 - Remote Printing
 - Email alerts
 - Enhanced PrintingScout
 - Job Accounting
 - Billing Meters
 - Usage Analysis Tools
 - PhaserSMART
 - Driver Colour Controls
 - RAM Collation
 - Configuration Card
- USB 2.0 and 10/100BaseT Ethernet connectivity
- 1 year On-Site Warranty



PHASER 7400DN FEATURE SET

The Phaser 7400DN has all the features and power of the Phaser 7400N model and adds:

- Automatic two-sided printing



PHASER 7400DX FEATURE SET

The Phaser 7400DX has all the features and power of the Phaser 7400DT model and adds:

- Replaces 550-sheet lower tray assembly with a 1650-sheet High Capacity Feeder for a total capacity of 2450-sheets.



PHASER 7400DT FEATURE SET

The Phaser 7400DT has all the features and power of the Phaser 7400DN model and adds:

- 256 MB more memory for a total of 512 MB
- 550-sheet lower tray assembly, increasing total capacity to 1350-sheets
- Custom page size and Banner Printing up to 304.8 x 1219.2 mm.
- 20 GB Hard Disk providing Advanced Printing Features:
 - Saved Print
 - Secure Print
 - Proof Print
 - Personal Print
 - CentreWare Internet Services
 - Extended Job Accounting
 - Font Storage
 - Extended Collation



PHASER 7400DXF FEATURE SET

The Phaser 7400DXF has all the features and power of the Phaser 7400DX model and adds:

- 550-sheet lower tray assembly for a total capacity of 3000-sheets
- 1000-sheet Finisher/Stacker with job offset, hole punch, stapling and booklet making

SECTION 2

Evaluating A3 Colour Laser Printers

A3 (279.4 X 431.8 mm) colour printers open up a wide range of possibilities in the office to create dynamic, attention-grabbing documents. Prints that once were outsourced to a costly service bureau can now be produced inexpensively, at the touch of a button. But evaluating a A3 colour printer can be a formidable task.

There are several models on the market boasting numerous features. Based on years of research and experience with the real-world needs of colour printer users, the Xerox Office Printing Business has identified some key issues for you to consider as you undertake your own A3 colour printer evaluation.

- **Speed**
- **Value**
- **Versatility**
- **Ease of Use**

This section of the Evaluator Guide will look at each of these areas, and suggest ways you can evaluate a printer's performance against that requirement. Do this for all printers you are considering and you'll see how the Phaser 7400 exceeds expectations on all counts.



EVALUATE PRINT SPEED

High quality colour printing cannot come at the expense of productivity - the two must go together. A colour printer must be able to handle a wide variety of documents quickly and reliably. A colour printer must keep up with the performance demands of multiple users in a shared network environment.

Measure overall performance.

To accurately measure overall performance in a real workgroup environment, send a mix of black and white and colour documents of different length and complexity to the printer over a standard Ethernet network. This combines the network transmission time, first-page-out time, and multi-copy engine speed to paint a clear picture of *actual* overall performance.

Calculate print job throughput.

Print job throughput is the time it takes from clicking the print button on your computer screen to the final delivery of the colour document to the output tray, sometimes called click-to-clunk. Raw print speed is only a part of the total print time; image-processing speed can be even more important to maximising throughput. Test for large multi-page multi-copy jobs such as reports, proposals and presentations.

Consider colour print speed.

Since colour printing, rather than black and white printing, is the primary use of most colour printers, it makes sense to pay attention to the colour print speed. Start with the rated engine speed, but be sure to investigate the total colour and black and white throughput, including image processing speed and first-page-out time.

THE XEROX
ADVANTAGE

HOW THE PHASER 7400 EXCEEDS THE SPEED REQUIREMENT:

The Phaser 7400 is the fastest colour printer in the office. At 36 ppm it is 33% faster than the HP 5550 in colour, and at 40 ppm it is 50% faster in black and white. By combining a 800 MHz image processor with over 16 years of colour printing experience, we have evolved the fastest image processing capabilities in the industry, giving us a first-page-out time as fast as 12 seconds for A4 colour, and 11 seconds for black and white.

The resulting productivity means that your print job is finished while competitors are still processing. And it's fast enough to replace some copier workload and short run production activities. The Phaser 7400 could even replace multiple printers in the office, both colour and black and white.

EVALUATE VALUE

Financial spend in today's business environment has to be justified. So when you are considering adding or replacing an office resource you must consider the cost of acquisition. Consider not only the base price, but also the feature set included in that price. What additional features might you need and what is the additional cost? Look also at supplies capacities, which will tell you something about the number of unproductive user interventions to expect. Operating costs over the life of the printer can often exceed the initial purchase price. Consider the cost-per-print compared to alternatives such as a service bureau.

THE XEROX ADVANTAGE

HOW THE PHASER 7400 EXCEEDS THE VALUE REQUIREMENT:

Starting at just 3,779€ the Phaser 7400 brings professional speed and colour capabilities within reach of every office. Add to that an average black and white cost-per-print of 0.018€** and an average colour cost-per-print of just 0.085€**, and you come up with an attractive alternative to a high-end black and white-only printer or a colour copier. The savings from printing medium to large volume colour jobs in-house rather than at a service bureau can pay for the printer over time, even if those types of jobs are only printed infrequently.

And the Phaser 7400 Colour Printer is engineered to require a minimum of user interventions. All of the user intervention is performed from the front or the top, unlike some printers requiring access to the rear of the printer to change some consumables or remove jams. Xerox offers high-capacity toner cartridges that last up to 18,000 prints for colour and 15,000 for black (based on 5% coverage). The toner cartridges are easy to handle and easy to install into keyed slots in the top of the printer. Less time spent taking care of the printer means more time printing.

* ERP

** based on an average 5% coverage per colour

EVALUATE VERSATILITY

Consider media weights and sizes - what type and variety of media will your organisation expect the printer to print on. Obviously a A3 printer must print up to 279.4 x 431.8 mm, but will it print on larger media to allow for full bleeds? Will the printer support a variety of sizes automatically from all the input trays? Does the printer accept envelopes in multiple sizes? How broad is the media weight range? Will the printer support automatic two-sided printing?

Consider input capacity - does the printer have high volume input capacity to support large uninterrupted print jobs? Is the input capacity adequately divided to allow for a variety of media selections? Will the duty cycle stand up the demands of your organisation?

Consider a variety of users - can the printer handle the requirements of multiple users with diverse needs? Consider the types of documents your network users may need to print; multi-page reports printed on both sides, large spreadsheets with colour highlights, customer newsletters, routine email and other internal documents, small production runs, custom jobs, and others.

THE XEROX
ADVANTAGE

HOW THE PHASER 7400 EXCEEDS THE VERSATILITY REQUIREMENT:

The Phaser 7400 handles media weights all the way up to 80 lb. Cover stock (216 gsm) from all trays and up to 100 lb Cover from Tray 1 (MPT). Sizes can range from 101.6 x 152.4 mm up to 304.8 x 457.2 mm as well as user definable custom sizes in-between. The Media Weight Sensor automatically selects the best printing conditions to match the loaded media.

For top quality results, Xerox-branded supplies are engineered to provide optimum performance in your Phaser printer. The Phaser 7400 prints on plain and heavy papers, Phaser branded transparencies, laser quality labels, envelopes, cover stock, recycled media, business card media, greeting cards, CD/DVD labels and inserts.

An input capacity of up to 3000 sheets and an output capacity of up to 1000 sheets assures office users of more uninterrupted printing and less user intervention. You'll always print on the media you expect thanks to the Smart Trays technology. The printer driver displays what media is in each tray and knows what your MS Office application is set for, and then matches them perfectly.

Finishing options run from an offset catch tray to various hole-punch and stapling positions, all the way to a V-fold booklet maker with saddle stitch stapling. Versatile enough to meet all your office requirements.

EVALUATE EASE-OF-USE

The best way to evaluate a printer's ease of use is to use it in a real environment over an extended period of time. But even without that opportunity, the following questions can help uncover a printer's true start-up and day-to-day productivity potential:

- **How many consumables are there and how difficult is it to replace them?**
- **Can you easily reach all areas of a printer? Some printers require you access the rear of the printer to replace a consumable.**
- **Is it easy to check the consumable status before committing to a large or important print job?**

Also, consider what tools are provided to help manage multiple printers in a network:

- **How easy is it to install on a network?**
- **How easy is it to learn to use and manage?**
- **Does it offer easy control both over the network and from its front panel?**

THE XEROX
ADVANTAGE

HOW THE PHASER 7400 EXCEEDS THE EASE-OF-USE REQUIREMENT:

Consumables

The Phaser 7400 provides easy access to all consumables directly from the front or top of the printer. Individual toners and imaging units ensure that you only replace items as necessary. Some manufacturers combine components, like toners with imaging units, in the name of convenience but you end up throwing out still-good parts just because one is used up.

And consumable status can be viewed directly on the front panel or conveniently from your PC.



Installation

The Phaser 7400 Colour Printer's Driver Installation process is designed to provide an easy and consistent installation process from all software sources, regardless of platform.

Features include:

- Automatic discovery of the printer on your network
- Automatic port creation
- Automatic printer model and feature detection
- Automatic driver installation
- Automatic IP address assignment

Install from the Web technology is used for the distribution of software from any of the following sources:

- Product CD
- The printer itself
- CentreWare IS Embedded Web Server
- Xerox Website

Step-by-Step (for Windows 9x and 2000 Installation)

The **Install Printer Driver** link launches the Setup program. Other links take users to Manuals and Videos, Technical Support, Register Printer, Colour Connection, PowerPoint Design Wizard, Printer Management Tools. The installer searches for a printer. It looks on physical ports on the computer - parallel and USB - as well as on a network (if present) for TCP/IP printers. If a printer is found on the network (already has an IP address), it highlights the printer and gives you the option to install this printer or a different one. A new feature - Subnet Mapping - means that if a Phaser 7400 has been previously installed on another subnet, it will show up here as well. If no printer is found, the installer directs you to go to the printer and choose "Select for Installation" from the front panel menu. By the time you get back to your computer, the installation is complete. For larger installations, the IT department can simply send an email to end-users with a link to the Install from Web feature. Users simply follow the link to the familiar next-next-next installation wizard and they're ready to print.

Operation

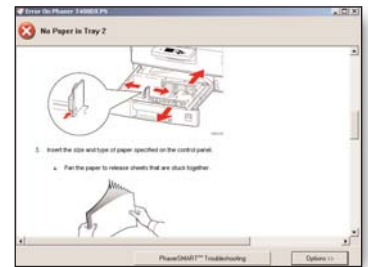
When you send a document to a Xerox network printer, our

All Phaser 7400 Printers Come With INTELLIGENT READY

Don't turn off the printer. The printer features Intelligent Ready software that tracks when and how the printer is used. Tracking these patterns over a rolling 3-week period, the printer automatically places itself in standby power-saving modes during periods of non-use. The printer will automatically return to its Ready mode, just prior to an expected use period, avoiding any warm-up time and minimising power usage in periods of non-use.

PrintingScout will instantly alert you if the printer needs attention and provide helpful on-screen text and graphics about what to do. This way, you'll go to the printer completely prepared - no surprises. No other printer on the market does this.

What would be better than knowing if your printer needs help before you print? How about avoiding the problem altogether? MaiLinX can automatically send an email to any designated person when a printer needs supplies or maintenance, so the printer is always ready.



Loading toners is a simple process, easily done from the top of the printer.

The large high-contrast front panel display is backlit and adjustable for easy viewing and is simple and intuitive to use. A list of help topics is available at the main menu. Pressing the *i* button pops up a contextual help message to explain whatever menu function or message is being displayed.



The Phaser 7400 printer's standard paper input tray holds 550 sheets (or 250 transparencies). In addition, all models include a 250-sheet Multi Purpose Tray. Up to three optional 550-sheet Feeders may be added (one is standard in the DT configuration). A 1650 sheet High Capacity Feeder (consisting of three 550 sheet trays) replaces the 550-sheet Feeder to give the DX configuration a total input capacity of 2450-sheets (including the multi purpose tray). Add one 550-sheet Feeder for a maximum of 6 trays and a total of 3000-sheets of uninterrupted printing! Individual tray capacities over 500 sheets allow users to add a full fresh ream of paper to a tray when they notice it is low, rather than having to bother with removing and setting aside some portion of the new ream.



All Phaser series printers provide detailed information about consumable usage through the front panel and via email notification so users can anticipate when an intervention may be needed.

You'll always print on the media you expect thanks to the Phaser 7400's Smart Tray technology. The driver displays what's in the printer, and knows what your MS Office application is set for, then matches them perfectly.

The Phaser 7400 can handle high monthly duty cycles up to 150,000 prints.

The Phaser 7400 includes Xerox' exclusive PhaserSMART™, an automated, internet-based, support delivery tool for customers using Xerox Network printers. This tool leverages information from the user's own printer to diagnose and deliver customer self support solutions. Available 24/7, support for your printer is only a mouse click away. Like other Xerox Network Printers, the Phaser 7400 is covered by a 1-year on-site warranty.

Printer Management



CentreWare® Internet Services

Xerox is the leader in embedded Web server technology. We've been including Web servers on our printers longer than any of our competitors. Just pull up the printer's CentreWare® Internet Services site on your favorite Web browser and easily find all you need to know about it - current status, user manuals, troubleshooting guides, software drivers, hot links to Xerox product information, software updates and support resources. Network administrators can easily monitor, configure and troubleshoot the printer right from their desktop - keeping the printer and its users running at full speed. It can also discover all of your networked printers and multifunction devices, regardless of manufacturer. On the Phaser 7400, CentreWare IS allows users to access the saved job repository directly from their desktops. The security of system access has been modeled after Microsoft system security levels.

Status

Displays information on input and output trays, capacities, page count and consumables information. Provides optional link to a supplies ordering site.

Jobs

Job Accounting provides links to browse, download, or clear Job Accounting Records. Usage Profile reports provide information on many aspects of printer usage, such as ink or toner used, number of pages printed and paper types used, gathered during the life of the printer. From this page you can view or print a report and also send it to an email address you enter below, or to users who are specified in the Usage Profile Properties page. Cancel Job clears the current print job. Print Saved Jobs allows you to select and print a previously saved job on the printer's hard drive, directly from your desktop.

Print

Print Demo Pages prints the demo pages that exhibit the printer's various capabilities for reproducing graphics, business charts and graphs and 2-sided printing. Print Help Pages prints the internal help pages on topics selected including: Front Panel Menu Map, Supplies, Connection Setup, Paper Tips, Print Quality Tips and Moving Guide. Print Colour Samplers (for both CMYK and RGB) helps users set or match specific colours, by showing what colours you get for different colour values. This is useful for matching specific colours, hues and gradients for graphic arts and office applications. Print Configuration Page provides general information on the printer, network connectivity and interfaces.

Properties

Provides a wealth of information on general printer settings, protocols, emulations, tool preferences and security. Primarily used by Network Administrators to configure printers.

Troubleshooting

Provides access to the printer's network logs and diagnostic tools.

Support

Provides links to printer drivers and other software, user manuals and videos, support links and a user customisable link. Clicking on Technical Support launches PhaserSMART, the new automated troubleshooting feature.

CentreWare® WEB

CentreWare WEB is the newest printer management tool in the CentreWare family. CentreWare WEB is designed to provide enterprise management solutions for all devices connected to your network - not just those from Xerox. Install, troubleshoot, configure and produce asset reports for all of your devices. Simply install CentreWare WEB on MS Windows 2000 or NT 4 servers and gain access from anywhere on your network through any standard web browser.

Key Advantages:

- When the system administrator enters the tool they will automatically see all of the printers in error state rather than searching for them - saves time.
- Conduct installation, configuration and troubleshooting on up to 25 printers simultaneously - saves time.
- Install, configure, troubleshoot and generate reports for all products, Xerox as well as others, with this tool so that you only need one tool for all of your management needs.
- Produce asset reports, error history reports, status reports and accounting reports from all of your devices and have them emailed to key recipients.
- To save time, Intuitive Wizards will guide you through infrequently performed tasks such as upgrading printer firmware, cloning device configurations, installing multiple printers and other tasks.

CONFIGURATION SUMMARY & OPTIONS



FEATURE		7400N	7400DN	7400DT	7400DX	7400DXF
Print Speeds	36 PPM Standard & Enhanced mode, 36 PPM Photo mode 12 second FPOT	✓	✓	✓	✓	✓
Controller	800 MHz PowerPC Processor, Adobe PS3 (136 PS Fonts), PCL5c (54 PCL Fonts)	✓	✓	✓	✓	✓
Memory	Total Slot 1 Slot 2	256 MB 256 MB 0 MB	256 MB 256 MB 0 MB	512 MB 256 MB 256 MB	512 MB 256 MB 256 MB	512 MB 256 MB 256 MB
Resolution (max)	Standard 600 x 600 x 1 (36ppm) Enhanced 600 x 1200 x 1 (36ppm) Photo 600 x 600 x 5 (18ppm)	✓	✓	✓	✓	✓
Hard Disk	20 GB	Optional	Optional	✓	✓	✓
Paper Handling	Automatic Two-sided Printing	Optional	✓	✓	✓	✓
	Lower Tray Assembly (550 sheets)	Optional	Optional	✓	Optional	✓
	High Capacity Feeder (1650 Sheets)	Optional	Optional	Optional	✓	✓
	1000 Sheet Finisher/Staple/Punch (hard disk required)	Optional	Optional	Optional	Optional	✓
Input Capacity	By configuration without options	800	800	1350	2450	3000
Common Features	Intelligent Ready, TekColor Correction, Watermark, N-Up Printing, Separation Pages, Cover Sheets, Auto Tray Select	✓	✓	✓	✓	✓
Extended Features	Embedded Web Server, Remote Printing, Email Alerts, Enhanced PrintingScout, Job Accounting, Billing Meters, Usage Analysis Tool, PhaserSMART	✓	✓	✓	✓	✓
	Custom page sizes and Banner Printing			✓	✓	✓
	Saved/Secure/Proof Print, CWIS Saved Print, Extended Job Accounting, Collation, Font Storage			✓	✓	
Connectivity	USB and 10/100 Base TX Ethernet	✓	✓	✓	✓	✓
Warranty	1 Year On-Site	✓	✓	✓	✓	✓

CONSUMABLES AND MAINTENANCE ITEMS

DESCRIPTION	CAPACITY	PART NUMBER
Standard Capacity Toner Cartridge, Cyan	9,000	106R01150
Standard Capacity Toner Cartridge, Magenta	9,000	106R01151
Standard Capacity Toner Cartridge, Yellow	9,000	106R01152
High Capacity Toner Cartridge, Cyan	18,000	106R01077
High Capacity Toner Cartridge, Magenta	18,000	106R01078
High Capacity Toner Cartridge, Yellow	18,000	106R01079
High Capacity Toner Cartridge, Black	15,000	106R01080
Staple pack, 3 x 5000	15,000	108R00710
Imaging Unit, Cyan	Up to 30,000	108R00647
Imaging Unit, Magenta	Up to 30,000	108R00648
Imaging Unit, Yellow	Up to 30,000	108R00649
Imaging Unit, Black	Up to 30,000	108R00650
Colour Imaging Kit, (includes Cyan, Magenta, and Yellow)	Up to 30,000 each	108R00697
Fuser, 110 V	Up to 100,000	115R00037
Fuser, 220 V	Up to 100,000	115R00038
Transfer Unit	Up to 100,000	101R00421
Waste Cartridge	Up to 30,000	106R01081

MEDIA SUPPORTED

Tray 1 (MPT)	64–270 g/m2 (17–72 lb. Bond, 22–100 lb. Cover)	TRAYS 2–6*	64–216 g/m2 (17–57 lb. Bond, 22–80 lb. Cover)
Custom Sizes		Custom Sizes	
Width:	100–320 mm (3.95–12.60 in.)	Width:	100–320 mm (3.95–12.6 in.)
Height:	90–1219 mm (3.55–48.00 in.)	Height:	148–457 mm (5.85–18.00 in.)
A6	105 x 148 mm	A6	105 x 148 mm
A5	148 x 210 mm	A5	148 x 210 mm
A4	210 x 297 mm	A4	210 x 297 mm
A3	297 x 420 mm	A3	297 x 420 mm
SRA3	320 x 450 mm	SRA3	320 x 450 mm
ISO B5	176 x 250 mm	B5 JIS	182 x 257 mm
B5 JIS	182 x 257 mm	B4 JIS	257 x 364 mm
B4 JIS	257 x 364 mm	Statement	5.5 x 8.5 in.
Statement	5.5 x 8.5 in.	Executive	7.25 x 10.5 in.
Executive	7.25 x 10.5 in.	Letter	8.5 x 11 in.
Letter	8.5 x 11 in.	US Folio	8.5 x 13 in.
US Folio	8.5 x 13 in.	Legal	8.5 x 14.0 in.
Legal	8.5 x 14.0 in.	Tabloid	11.0 x 17.0 in.
Tabloid	11.0 x 17.0 in.	Tabloid Extra	12.0 x 18.0 in.
Tabloid Extra	12.0 x 18.0 in.		

ENVELOPES:

A7	5.25 x 7.25 in.
DL	110 x 220 mm
C6	114 x 162 mm
C5	162 x 229 mm
C4	229 x 324 mm
B5	176 x 250 mm
#10 Commercial	4.12 x 9.5 in.
Monarch	3.87 x 7.5 in.

*Transparencies can be loaded into Tray 2 only.

PRINT QUALITY MODES

The print-quality mode and TekColor correction directly control the *quality* of your prints.

The print-quality mode and paper type directly control the print *speed*.

You can change these settings in the printer driver or on the control panel.

MODE	DESCRIPTION
Standard	General-purpose mode for crisp, bright colour prints at high speed. Recommended for most office use and quick prints.
Enhanced	High-quality mode for fine lines and sharp text. Recommended for detailed prints.
Photo	Highest-quality mode for very smooth colour shades. Recommended for printing photographs or when using graphic arts applications and press matches.
Automatic	Automatically selects the most optimal print-quality mode for the paper type selected. For example, Photo print-quality mode is used when printing on glossy paper, but Standard print-quality mode is used when printing on plain paper. (This setting is only available in the printer driver.)

TEKCOLOR® CORRECTIONS

The TekColor correction options provide simulations of different colour devices. **Automatic** is the default correction for general image processing. See the following table to determine what option you want to use.

SELECTION	USE FOR:
Automatic	Applies the best colour correction to each graphic element: text, artwork, and photographs.
Office Colour	sRGB Display Approximates the colours on a computer display. sRGB Vivid Produces brighter, more saturated colours than sRGB Display.
Press Match	SWOP Press Matches Specifications for Web Offset Publications. Euroscale Matches FOGRA glossy paper specification. Commercial Approximates U.S. commercial press target. SNAP Press Matches Specifications for Newsprint Advertising Production.
None	Applies no colour correction. Use with other colour management tools, such as ICC (International Colour Consortium) profiles, ColorSync, or the PANTONE® Colour Chart for your printer.
Black and White	Converts all colours to shades of gray.

SPECIFICATIONS

Printer	Optional 1650-Sheet High-Capacity Feeder	550-Sheet Feeder	Finisher
Height: 47.1 cm	Height: 40.1 cm	Height: 10.9 cm	Height: 101.6 cm
Width: 64.0 cm	Width: 59.7 cm	Width: 59.7 cm	Width: 81.3 cm
Depth: 62.3 cm	Depth: 59.9 cm	Depth: 59.9 cm	Depth: 59.5 cm
Weight: 84 kg	Weight: 53 kg	Weight: 16 kg	Weight: 55 kg

INFORMATION SOURCES

Front Panel

The Front Panel offers a suite of tools and information pages to help solve printing problems, media feed and supply issues and administration problems.

CD ROM

User Documentation CD-ROM

- Reference Guide
- Setup Guide (poster)
- Quick Reference Guide
- Instructional Videos

Printer drivers

Driver Installers (Mac, Windows)

ReadMe release notes

Internet Services Help (HTML documentation)

Disk Generating Utility (creates floppy disks of the drivers)

Driver Update Utility

Font Manager

Adobe Type Manager (ATM)

On the Web

Visit www.xerox.com/office for:

- Product, supplies and service information
- Downloading printer drivers
- Finding your local reseller
- On-line documentation

Visit www.xerox.com/office/support for:

The same troubleshooting knowledge base used by Xerox Customer Support staff to provide the latest technical information on:

- Application issues
- Networking issues
- Printer errors
- Print-quality issues
- Troubleshooting

Visit www.colorconnection.xerox.com for:

- Colour resource for tools and information to help you get the most from your colour printer
- Interactive tutorials and helpful tips for using your printer and favorite software applications
- Easy access to on-line technical support
- Customised features to meet your individual needs



Questions? Comments? Problems?

If you have any questions or issues with your evaluation of this printer, please contact your Xerox sales representative or visit us on the web at www.xerox.com/office

