

Phaser®
6140
Letter-size
Color
Laser Printer



Xerox® Phaser® 6140
Color Laser Printer
Business-ready color
for the way you work



Phaser® 6140 Color Laser Printer

Exceptional color printing for today's business world. You want the advantage of color to get noticed. You need a no-fuss, waste-conscious printer that's up to the task. Enter the Xerox Phaser 6140 color laser printer, your simple, productive printing solution.



Ready to help

We designed the Phaser 6140 as a simple color printer that supports single users and small workteams.

- **Print and go.** The Phaser 6140 color printer works quickly, with print speeds of up to 19 ppm for color and 21 ppm for black-and-white.
- **Stay secure.** IPsec, SNMPv3, IP filtering, IPv6 and available Secure Print. The latest security advancements keep your sensitive documents away from unintended recipients.
- **Total peace of mind.** Sturdy and reliable, the Phaser 6140 printer is built for the long haul. But just in case, you're completely covered with the industry's best support, including a one-year on-site warranty, the Xerox Total Satisfaction Guarantee, and unbeatable access to highly trained Xerox service professionals.
- **More printer for more people.** Connect and go, thanks to built-in networking and seamless compatibility with mixed-user environments, including PC, Macintosh and Linux.
- **Room to grow.** Easily add memory to enable more time-saving features, like Saved Print, which lets you store frequently used files on the device for fast walk-up printing. Plus, get more uninterrupted productivity by adding a second 250-sheet paper tray for a total of 500 sheets.
- **Easy management.** With Xerox CentreWare® IS, remote device administration is handled with ease right from your computer's browser.
- **Troubleshooting assistance.** Our PrintingScout® alerts proactively notify you of problems such as interrupted printing, and offers quick tips for solving them.

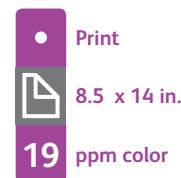
Head-turning color

The Phaser 6140 color printer gives your documents a powerful, colorful boost.

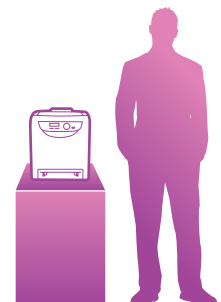
- **Outstanding print quality.** A print resolution of up to 600x600x4 dpi gives your documents attention-grabbing appeal with vibrant color reproduction.
- **Advanced toner technology.** Xerox-exclusive EA Toner uses particles engineered for uniform size and shape, producing superior image detail and line definition, and text that's sharp and clear.
- **Always the right colors.** Pantone® Color approved solid-color simulations and Xerox color correction technology ensure results that always match your expectations.
- **True Adobe® PostScript® 3™.** Count on consistently precise print jobs with the brightest, truest colors and superior graphics.

Phaser® 6140 Quick Facts

- Print up to 19 ppm color, 21 ppm black-and-white
- 600 x 600 x 4 dpi
- Ideal for 1–5 users
- 40,000 pages/month duty cycle
- 256 MB memory, expandable to 1,280 MB



WxDxH:
15.8 x 18 x 16.3 in.
400 x 457 x 414 mm





Low-impact, inside and out

From arrival to disposal, the Phaser 6140 printer helps you meet today's environmental challenges.

- **Earth friendliness, delivered.** Cleverly designed packaging for both the printer and its consumables means you'll create up to 80% less waste than with comparable laser printers.
- **Print more, use less.** Whether you choose manual two-sided printing or upgrade to convenient automatic duplexing, you'll conserve paper for reduced costs and increased sustainability. Plus, features like N-up printing, which lets you print multiple pages on one sheet, help you save even more.
- **A perfect fit.** Its small footprint allows for easy integration within your work space, whether on your desk or in a central location.
- **The quiet partner.** Music to the ears of those who work around it, the Phaser 6140 printer quietly goes about its business.
- **Conservation built-in.** Reduce energy consumption with intelligent sleep mode. You can choose when the printer automatically switches to Power Save mode. Or, simply press the convenient front panel button to start or stop Power Save when it suits you.
- **Energy efficient.** The Phaser 6140 printer meets the ENERGY STAR® requirements for energy consumption.
- **Hassle-free recycling.** The Xerox Green World Alliance recycling program lets you ship your used print cartridges to Xerox for free, and we'll handle recycling.

1 Optional automatic two-sided printing delivers money-saving, professional-looking output.

2 The 250-sheet tray provides plenty of paper capacity for a busy individual user or small workteams.

3 An additional 250-sheet paper tray (optional) increases total capacity to 500 sheets of uninterrupted printing.

4 Optional wireless network adapter gives you the flexibility of cable-free network printing.

5 Intuitive front panel includes on-screen toner gauge for quick, at-a-glance checking of current toner levels.

6 Convenient front-panel button lets you wake the printer up or initiate Power Save mode when the printer is idle.



Two-sided



N-Up



EA Toner



Sleep Mode



Low Waste



Energy Star

Phaser® 6140

Color Laser Printer



		Phaser 6140N
Speed		Up to 19 ppm color / 21 ppm black-and-white
Duty Cycle		Up to 40,000 pages / month ¹
Recommended Volume		Up to 2,500 pages / month ²
Paper Handling	Standard	Manual Feed Slot: 1 sheet; Custom Sizes: 3 x 5 in. to 8.5 x 14 in. / 76.2 x 127 mm to 216 x 356 mm
	Optional	Tray 1: 250 sheets; Custom Sizes: 3 x 5 in. to 8.5 x 14 in. / 76.2 x 127 mm to 216 x 356 mm
		Tray 2: 250 sheets; Custom Sizes: 5.8 x 8.3 in. to 8.5 x 14 in. / 148 x 210 mm to 216 x 356 mm
Paper output		150 sheets face down
Automatic two-sided printing		Optional
Print		
First-page-out-time		As fast as 13 sec. color / 12 sec. black-and-white
Resolution (max)		Up to 600 x 600 x 4 dpi
Processor		400 MHz
Memory (std / max)		256 MB / 1,280 MB
Connectivity		USB 2.0, 10/100Base-TX Ethernet, Optional wireless network adapter
Page description languages		Adobe® PostScript® 3™, PCL® 6 emulation
Print features	Standard	N-up, Fit to page, Booklet printing, Skip blank pages, Transparency separators, Run black, Covers/Separators ³ , Poster printing ³ , Watermarks ³ , Overlays ³ , Banner sheets ³ , Draft mode ³
	Optional ⁴	Secure Print, Proof Print, Personal Print, Saved Print, RAM collation
Security		IPSec, SNMPv3, Secure Print ⁴ , IP filtering, IPv6
Warranty		One-year on-site warranty, Xerox Total Satisfaction Guarantee

¹ Monthly volume capacity expected in any one month. Not expected to be sustained on a regular basis.

² Range reflects the number of pages per month the product can regularly print while maintaining optimal performance (considering factors including supplies replenishment and reliability over the expected product life).

³ Accessed via PCL driver.

⁴ Requires at least 512 MB RAM.

Device Management

Phaser Installer, CentreWare® IS Embedded Web Server, CentreWare Web, PrintingScout®, Email alerts

Print Drivers

Windows® 2000/XP/Vista, Server 2003/2008, Xerox Global Print Driver, Xerox Mobile Express Driver, Mac OS® version 10.3 and above, Linux: SUSE™, Red Hat®, TurboLinux 10 Desktop

Font Capability

136 PostScript® fonts; 81 PCL® fonts

Media Handling

Manual Feed Slot and Tray 1: 17 – 32 lb. bond to 40 – 80 lb. cover / 65 – 220 gsm; Media types: Plain paper, glossy, envelopes, labels, cardstock, postcards; 250-sheet feeder (optional): 16 – 28 lb. bond / 60 – 105 gsm; Duplex Unit (optional): 16 – 28 lb. bond / 60 – 105 gsm

Color Standards

PANTONE® Color approved solid-color simulations, Color Correction, ICC Profile, ColorSync

Operating Environment

Temperature: Storage: -4° to 104° F / -20° to 40° C; Operating: 50° to 90° F / 10° to 32° C; Humidity: 15% to 85%; Sound pressure levels: Printing: 51.4 dB(A), Standby: 30.1 dB(A); Sound power levels: Printing: 6.33 B, Standby: 4 B; Warm-up time (from sleep mode): 30 seconds

Electrical

Power: 110–127 VAC, 50/60 Hz or 220–240 VAC, 50/60 Hz; Power consumption: Standby: 50 W, Printing: 280 W; Power Saver: 8 W (default time to Power Saver is 30 min.), ENERGY STAR® qualified

Dimensions (WxDxH)

15.8 x 18 x 16.3 in. / 400 x 457 x 414 mm; Weight: 40.5 lbs. / 18.4 kg; Package Dimensions (WxDxH): 22.5 x 21.4 x 23.3 in. / 572 x 542 x 590 mm; Weight: 52 lbs. / 23.5 kg; Optional 250-sheet feeder: 15.8 x 18 x 4.2 in. / 400 x 457 x 108 mm; Weight: 9.26 lb. / 4.2 kg

Certifications

FCC Part 15, Class B, Listed UL 60950-1/CSA 60950-1-03, CE Mark applicable to Low Voltage Directive 2006/95/EC and EMC Directive 2004/108/EC, Section 508 ADA

What Comes In The Box

- Phaser 6140 Printer
- Starter Toner Cartridges (1,000 (CMYK) print capacity)
- Software and Documentation CD (with User Manual, Quick Installation Guide, Warranty Statement)
- Power cord

Supplies Recycling Program

Consumables for the Phaser 6140 are part of the Xerox Green World Alliance Supplies Recycling Program. For more information, please visit the Green World Alliance website at www.xerox.com/gwa

Supplies

Toner Cartridges¹:

Cyan: 2,000 std. pages	106R01477
Magenta: 2,000 std. pages	106R01478
Yellow: 2,000 std. pages	106R01479
Black: 2,600 std. pages	106R01480

Options

250-sheet feeder	097S04070
512 MB Phaser Memory	097S03635
Duplex unit	097S04069
Wireless network adapter	097S03740

¹ Average standard pages. Declared Yield in accordance with ISO/IEC 19798. Yield will vary based on image, area coverage and print mode.



For more information, call 1-877-362-6567 or visit us at www.xerox.com/office

