

Phaser®
3600
Letter-size
Black-and-white
Laser Printer



Xerox® Phaser® 3600 Laser Printer Evaluator Guide



About this Guide

This Evaluator Guide introduces you to the Xerox Phaser 3600 laser printer, explains its key features and performance advantages, and provides guidance throughout your printer evaluation process.

Section 1: Introducing the Xerox Phaser 3600 Laser Printer

- 3 Product Overview
- 5 Phaser 3600 Configurations and Accessories

Section 2: Evaluating Laser Printers

- 6 Overview
- 7 Evaluate Ease of Installation, Management and Use
- 9 Evaluate Productivity
- 11 Evaluate Reliability

Section 3: Configurations, Specifications, Supplies, Support and Additional Information Sources

- 12 Configuration Summary
- 13 Specifications
- 13 Supplies, Accessories and Extended Service Agreements
- 14 Support and Additional Information Sources

Section 1: Introducing the Phaser 3600 Laser Printer

Product Overview

The Phaser 3600 laser printer combines surprisingly high-end performance features with consistent day-in-day-out reliability — all in a compact device that's built to keep your productivity high and your costs low.

The power to please

The Phaser 3600 laser printer brings Xerox quality and superior performance to single users and small workgroups that demand superior productivity.

- Fast printing performance delivers results at up to 40 ppm — plenty of speed to keep up with your big print load.
- A first-page-out time as fast as 9 seconds means you spend less time waiting for print jobs and more time staying productive.
- Complex print jobs, handled with ease. A robust 400 MHz processor works behind the scenes to quickly take care of whatever comes its way — even multipage jobs loaded with graphics.
- Network printing (standard on the N and DN configurations) makes the Phaser 3600 laser printer a more powerful office ally, helping more users get more work done.
- Get even more helpful capabilities, like Secure Print (standard on network configurations), which keeps a private print job in the queue until released by the job owner, and RAM collation, which speeds up larger print jobs by quickly processing multiple sets of multipage documents.

Unbeatable value

With advanced features typically found on higher-priced laser printers, the Phaser 3600 offers more performance for less.

- More speed, better features and a robust, user-friendly design — no other printer in its class matches the Phaser 3600 laser printer's total-value offering.
- Print more without interruption with two standard paper trays holding a total of 600 sheets. Need more capacity? An additional 500-sheet tray is available.
- Affordability comes standard, with a low cost per page and helpful, cost-saving features like toner-save and energy-save modes, plus available automatic two-sided printing and N-Up printing for more efficient paper usage.
- The print cartridge is easy to replace, and lets you choose standard-capacity at a lower price, or high-capacity, for greater print volumes and reduced total cost of ownership.
- We stand behind our promise of outstanding reliability and performance with a standard one-year warranty. Plus, the Xerox Total Satisfaction Guarantee provides free replacement of your Xerox device if for any reason you are not satisfied with its performance.

The capacity to do more

The Phaser 3600 laser printer offers more printing features for fast-paced businesses, while additional options further expand the printer's capabilities.

- Automatic two-sided printing is standard on the Phaser 3600DN, and available as an option on the Phaser 3600B and 3600N models.
- Helpful administration tools, like CentreWare IS internal web server, make it fast and easy to manage everyday usage.
- With a simple layout and easy-to-read two-line display, the front panel user interface shows printer-status information, error messages and jobs in progress.
- The 100-sheet multipurpose tray handles a variety of paper, from 16 – 43 lb. bond to 60 lb. cover (60 – 163 gsm), including envelopes, labels, business cards and other specialty media.
- Standard 600-sheet paper capacity can be expanded to 1,100 sheets for extended periods of uninterrupted printing.

Section 1: Introducing the Phaser 3600 Laser Printer

Xerox Phaser 3600 Laser Printer Configurations



Phaser 3600B

The Phaser 3600B configuration includes an impressive mix of print features.

Performance:

- Print speeds of up to 40 ppm (letter), 38 ppm (A4)
- First-Page-Out Time as fast as 9 seconds
- 600 x 600 dpi print resolution (up to 1200 x 1200 enhanced image quality)
- Two-sided printing (optional)
- Page Description Languages: PostScript® 3™ compatibility, PCL® 6 and 5e emulations
- 400 MHz processor
- 64 MB (standard), 512 MB (maximum) memory
- Connectivity: USB 2.0 and parallel

Reliability:

- Duty Cycle of up to 200,000 pages
- Recommended Average Monthly Print Volume of up to 8,000 pages
- **Warranty:** One-year on-site, Xerox Total Satisfaction Guarantee

Paper Handling:

- **Tray 1 (Multipurpose Tray):** 100 sheets; Custom sizes from 3 x 5 in. (76 x 127 mm) to 8.5 x 14 in. (216 x 356 mm); Weights: 16 to 43 lb. bond to 60 lb. cover / 60 to 163 gsm
- **Tray 2:** 500 sheets; Selectable sizes from letter to legal / A5 to A4; Weights 16–28 lb. bond / 60–105 gsm
- **Output Tray:** 250 sheet face-down, 100 sheet face-up

Print feature highlights:

- Smart Trays, Booklet printing, Scaling, Fit to page, Watermarks, Overlays, Posters, Custom-size pages, Covers, N-up, Toner save mode



Phaser 3600N

Builds on the Phaser 3600B with the addition of:

Controller:

- Connectivity — 10/100BaseTX Ethernet
- 128 MB (standard), 512 MB (maximum) memory

Print Features:

- Secure Print
- Collation



Phaser 3600DN

Builds on the Phaser 3600N with the addition of:

Print Performance:

- Standard automatic two-sided printing

Optional

Optional accessories let you tailor-fit the Phaser 3600 laser printer to your specific needs, with more capabilities, paper capacity and features.

Paper Handling:

- Two-sided printing*
- 500-sheet paper tray; Selectable sizes from letter to legal / A5 to A4; Weights 16–28 lb. bond / 60–105 gsm

Controller:

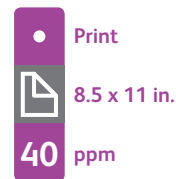
- 64, 128 or 256 MB memory upgrades
- Wireless Ethernet networking**

* Optional on B and N configurations, standard on DN configuration

** N and DN configurations only

Phaser® 3600 Quick Facts

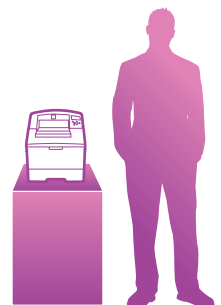
- Print up to 40 ppm
- 600 x 600 dpi (up to 1200 x 1200 enhanced image quality)
- 400 MHz processor
- 200,000 pages/month duty cycle
- 600-sheet capacity, expandable to 1,100 sheets



WxDxH:

3600B, N:
15.7 x 18.8 x 15.1 in.
399 x 478 x 383 mm

3600DN:
15.7 x 20.2 x 15.1 in.
399 x 512 x 383 mm



Section 2: Evaluating Black-and-White Laser Printers

Overview

Based on continuous study of our customers' productivity requirements, Xerox recommends that the following criteria be used when evaluating which black-and-white laser printer to purchase for your office.

Ease of Installation, Management, and Use

Does the printer offer an installation process simple enough for nontechnical users? Does it include helpful tools that simplify day-to-day management?

Productivity

Will the printer keep up with the demands of a small workgroup or single user?

Reliability

Is the printer robust enough to handle your ongoing daily workload, and is it backed by quality service?

This section examines each of the above evaluation criteria in greater detail, covering the specific features and performance attributes you should look for in a black-and-white laser printer. When the same criteria are used to evaluate every device under consideration, you'll see how the Phaser 3600 laser printer excels against other manufacturers' products.



Section 2: Evaluating Black-and-White Laser Printers

Evaluate Ease of Installation, Management, and Use

Installing printers can be challenging, whether in a large organization or small office. The process includes integrating the printers into your existing office environment and may include connecting them to your network infrastructure. If network printing is a requirement, evaluate the ease with which drivers can be deployed to multiple users. Also, evaluate the management tools delivered with the printer, and whether they will ease the task of managing the device. Lastly, think about ease of use. Are the user interfaces, both the front panel and print driver, well designed and easy to navigate?

How the Phaser 3600 laser printer exceeds the installation requirement:

Installation

Easy installation starts with unpacking the device and ends when it's powered up and ready for use. The Phaser 3600 laser printer is easily removed from its packaging, and features a compact footprint that's well suited for placement within easy reach on a user's desktop. The included quick install guide helps install optional accessories, connect the printer to your network (if applicable) and a power source, and power-up the device. When connected to your network, the printer will automatically be assigned an IP address and join the network via DHCP (other protocols can be set at the front panel). Device settings such as language selection and feature setup are completed either at the front panel or via remote management software like Xerox CentreWare® Internet Services (CentreWare IS) or CentreWare® Web.

Driver deployment

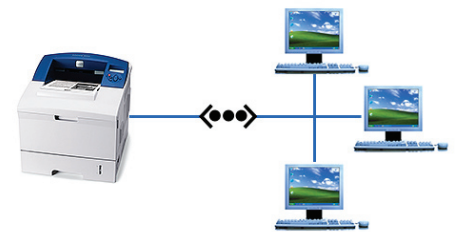
Xerox includes an installation CD that features an easy, wizard-based driver-installation process. If preferred, print and scan drivers can also be easily downloaded from the Xerox website.

How the Phaser 3600 laser printer exceeds the management requirement:

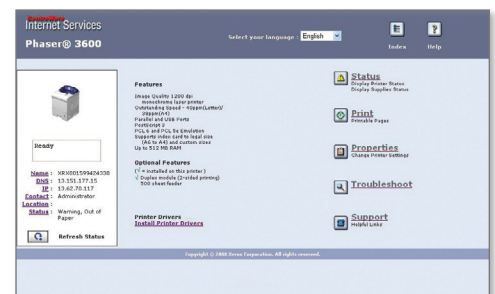
Xerox management software

Xerox CentreWare Web is a powerful device management solution for IT departments. This free software eases the chore of installing, configuring, managing, monitoring and pulling reports from SNMP-compliant networked printers and multifunction printers throughout your enterprise — regardless of vendor. Xerox also addresses enterprise asset management through compatibility with network management tools for Sun, Novell, Microsoft, Linux and other environments.

The Phaser 3600 laser printer also includes CentreWare IS, an embedded web server that makes it fast and easy to manage everyday usage. Users and administrators get quick and convenient access to a wealth of features, including printer and job status, toner volume updates, media availability, in-depth accounting information, and more, via any standard web browser.



The Phaser 3600 laser printer (N and DN configurations) automatically joins your office network.



CentreWare IS helps administrators quickly install, configure, troubleshoot and analyze usage of the Phaser 3600 laser printer using any standard web browser.

Xerox office services

Xerox offers a host of productivity-enhancement services for managing an office's document output and asset infrastructure. Such services deliver measurable business results by leveraging a powerful set of office technologies, business processes, methodologies and software tools to reduce costs and improve productivity. These offerings are summarized in Section 3 of this guide.

How the Phaser 3600 laser printer exceeds the ease-of-use requirement:

Front panel interface

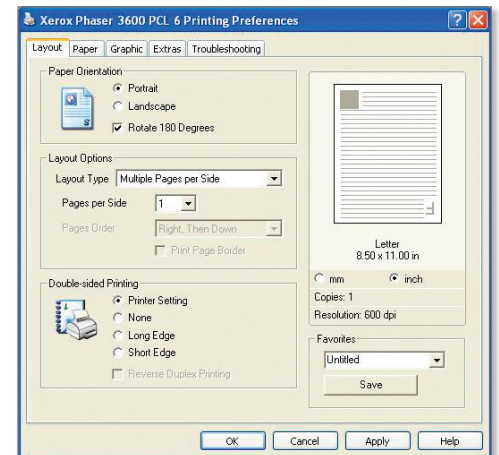
The Phaser 3600 laser printer features a simple, easy-to-navigate front-panel user interface. A backlit, two-line display shows printer status information, error messages and jobs in progress. Menu-based navigation features are accessed using intuitively arranged buttons below the front-panel display.

Bidirectional print drivers

The Phaser 3600 laser printer includes print drivers for PostScript® 3™ and PCL® 6 and 5e emulations. Organized by tabs, the print drivers make job programming easy and intuitive. The most commonly used features are located on the default tab, with advanced features easily accessible when programming more complex jobs. The print drivers also provide bidirectional information such as system status, consumable status, job status, installed options and more.



The Phaser 3600 laser printer's front panel.



Bi-directional print drivers allow for easy job programming right at the user's desktop.

Section 2: Evaluating Black-and-White Laser Printers

Evaluate Productivity

Productivity is a critical consideration when evaluating which printer to purchase for your office. Does the printer deliver the level of performance required to support the workload of a busy single user or a small workgroup? Does it produce sufficient print quality? Can the printer be expanded to meet a workgroup's evolving needs, and does it offer the media flexibility to support a variety of jobs?

How the Phaser 3600 laser printer exceeds productivity requirement:

Printing performance

With a fast print speed of up to 40 ppm, even the heaviest workloads are handled with ease by the Phaser 3600 laser printer. And, the printer's powerful 400 MHz processor can receive a rapid succession of simple and complex print jobs while maintaining all-day productivity.

Plus, RAM collation speeds up larger print jobs by quickly processing multiple sets of multipage documents.

For average print jobs of three pages or less, the most important specification is first-page-out time, and the Phaser 3600 laser printer delivers in as few as 9 seconds.

Print productivity is further enhanced with even more advanced features, like booklet printing, N-up, collation, secure print and watermarks.

Print quality

The Phaser 3600 laser printer outputs at 600 x 600 dpi (up to 1200 x 1200 enhanced image quality), producing excellent results without compromising the printer's outstanding speed. Whether printing spreadsheets, presentations or customer collaterals, the Phaser 3600 laser printer delivers truly impressive print quality.

Expandability

The Phaser 3600 laser printer offers more printing features for fast-paced business on a budget. Multiple configurations are available to meet the needs of a busy single user or a small workgroup, while more options further expand the printer's capabilities.

For those users who print a high volume of large, complex files, controller memory can be expanded to a maximum of 512 MB with 64 MB, 128 MB, or 256 MB upgrades.

Plus, a wireless network adapter can be added to allow easy integration with any wireless networking environment.

For longer periods of uninterrupted printing, consider increasing paper capacity by including an additional 500-sheet feeder, for a total paper capacity of 1,100 sheets.

Media support

The WorkCentre 3600 laser printer offers scalable paper capacity to handle the diverse needs of offices of all sizes. Paper capacity starts at 600 sheets, with an optional maximum capacity of 1,100 sheets.

Paper capacity and media support offered by the WorkCentre 3600 laser printer include:

Standard trays:

- Tray 1 (Multipurpose tray): Up to 100 sheets; custom sizes from 3 x 5 in. (76 x 127 mm) to 8.5 x 14 in. (216 mm x 356 mm); 16-43 lb. bond to 60 lb. cover / 60 to 163 gsm
- Trays 2: Up to 500 sheets; selectable sizes from letter to legal / A5 to A4; 16 to 28 lb. bond / 60 to 105 gsm

Optional:

- Tray 3: Up to 500 sheets; selectable sizes from letter to legal / A5 to A4; 16 to 28 lb. bond / 60 to 105 gsm
- Two-sided output: 20-24 lb. bond / 75-90 gsm

Media types:

- Plain paper, envelopes, labels, transparencies, cardstock



Phaser 3600 laser printer shown with optional 500-sheet Tray 3.

Section 2: Evaluating Black-and-White Laser Printers

Evaluate Reliability

Office productivity is tied directly to the reliability of the devices upon which users depend. Consider whether the printer is rated to handle your expected day-to-day print volume. If a problem occurs, does the manufacturer stand behind its product with timely and effective service and support?

How the Phaser 3600 laser printer exceeds the reliability requirement:

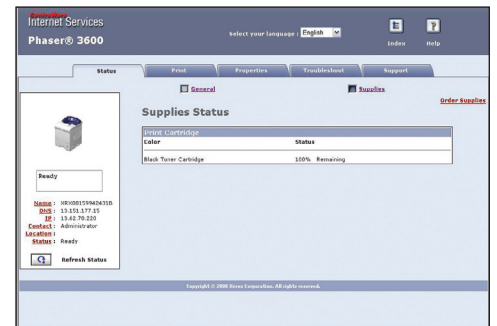
Day-to-day operation

With a rated duty cycle of up to 200,000 pages* per month, and a recommended Average Monthly Print Volume (AMPV) of up to 8,000 pages, the Phaser 3600 laser printer is adept at handling normal daily workloads as well as the heaviest peak-period workloads. The Phaser 3600 laser printer also helps avoid interruptions thanks to its standard 600-sheet paper capacity, and the ability to increase capacity to 1,100 sheets. Plus, proactive reporting of current toner levels ensures you'll have replacement cartridges on hand when you need them.

* Print volume uniformly distributed over 30 days.

Service/support

Building on the reliability engineered into the Phaser 3600 laser printer, Xerox has implemented a sophisticated service-delivery network capable of maintaining your equipment, addressing issues, and training IT staff and users on how to get the most out of your purchase. Also, at Xerox, we stand behind our promise of outstanding reliability and performance with a standard one-year warranty plus the unmatched Xerox Total Satisfaction Guarantee, which provides free replacement of your Xerox device if for any reason you are not satisfied with its performance.



Current toner-level updates help ensure you have replacement cartridges on hand before the printer runs out.

Section 3: Configurations, Specifications, Supplies, Support and Additional Information Sources

Configuration Summary



	3600B	3600N	3600DN
Speed	Up to 40 ppm letter, 38 ppm A4		
Duty Cycle	200,000 pages / month		
Paper Handling Paper input	Standard	Tray 1 (MPT): 100 sheets; Custom sizes: 3 x 5 to 8.5 x 14 in. / 76 x 127 mm to 216 x 356 mm	
		Tray 2: 500 sheets; Selectable sizes from letter to legal / A5 to A4	
	Optional	Tray 3: 500 sheets; Selectable sizes from letter to legal / A5 to A4 (1,100-sheet total capacity)	
Paper output	250 sheet face-down, 100 sheet face-up		
Automatic two-sided printing	Optional		Standard
Print First-page-out-time	As fast as 9 seconds		
Resolution (max)	600 x 600 dpi (up to 1200 x 1200 enhanced image quality)		
Processor	400 MHz		
Memory (std / max)	64 MB / 512 MB		128 MB / 512 MB
Connectivity	Parallel, USB 2.0		10/100Base-TX Ethernet, Parallel, USB 2.0
Page description languages	PostScript® 3™ compatibility, PCL® 6 and 5e emulations		
Print features	Standard	Smart Trays, Booklet printing, Scaling, Fit to page, Watermarks, Overlays, Posters, Custom-size pages, Covers, N-up, Toner save mode, Secure print*, Collation*	
Warranty	One-year on-site warranty, Xerox Total Satisfaction Guarantee		

* Standard on N/DN Configurations. Optional on B Configuration

Section 3: Configurations, Specifications, Supplies, Options, Support and Additional Information Sources

Specifications

Specifications			
Device Management	Phaser Installer, CentreWare® IS Embedded Web Server*, CentreWare® Web*, Global Print Driver*, Font management utility*		
Print Driver Support	Apple: Mac OS® 10.2 and above Linux: Various OS including Red Hat® 8-9, Fedora™ Core 1-4, Mandrake 9.2-10.1, SUSE 8.2-9.2 Microsoft: Windows® 2000/XP/2003/2008 Server, Vista Unix: HP-UX, Sun Solaris™ Xerox: Walk-Up® Print Drivers		
Protocol Support	Connectivity: USB 2.0, IEEE 1394 Parallel, 10/100BaseTX Ethernet (N and DN configurations) Network: Ethertalk, HTTP, HTTPS, SNMP v.1/2/3, TCP/IP, IPv6 Management: Auto IP, DHCP, SNMP v.1/2/3 Page Description Languages: PostScript® 3™ compatibility, PCL® 6 and 5e emulations		
Font Capability	136 PostScript® fonts; 68 PCL® fonts (4 MB flash memory for fonts and macros)		
Media Handling Paper Capacity	Tray 1 (MPT): Up to 100 sheets Tray 2: Up to 500 sheets Tray 3 (optional): Up to 500 sheets		
Supported Media Sizes	Tray 1 (MPT): Custom sizes from 3 x 5 in. (76 x 127 mm) to 8.5 x 14 in. (216 mm x 356 mm) Tray 2: Selectable sizes from letter to legal / A5 to A4 Tray 3 (optional): Selectable sizes from letter to legal / A5 to A4		
Supported Media Weights	Tray 1: 16-43 lb. bond to 60 lb. cover / 60 to 163 gsm Tray 2: 16 to 28 lb. bond / 60 to 105 gsm Tray 3 (optional): 16 to 28 lb. bond / 60 to 105 gsm Two-Sided Output: 16 to 28 lb. bond / 60 to 105 gsm		
Operating Environment	Temperature: • 50° to 90° F (10° to 32° C) Relative Humidity: • Operating: 20% to 80% Sound Pressure: Printing: 56.0 dB(A), Standby: 35.0 dB(A) Warm-Up Time (from power save): 31 seconds or less FPOT from power save: 40 seconds		
Electrical	Power: 110-127 VAC, 50/60 Hz or 220-240 VAC, 50/60 Hz Power Consumption: Printing: 700 W, Standby: 130 W, Power Save: 13 W		
Dimensions Width x Depth x Height, Weight	3600B/N: 15.7 x 18.8 x 15.1 in. (399 x 478 x 383 mm), 39 lb. (17.9 kg) 3600DN: 15.7 x 20.2 x 15.1 in. (399 x 512 x 383 mm), 42 lb. (20.9 kg)		
Certifications	Listed to UL 60950-1/CSA 60950-1-03, 1st Edition, FDA/CDRH – Class 1 Laser Product, FCC Part 15, Class B, Canada ICES-003, Class B, CE marked, Low Voltage Directive 2006/95/EC, EN 60950-1, 1st Edition, EN 60825-1 – Class 1 Laser Product, EMC Directive 2004/108/EC, EN 55022, Class B, EN 55022, Class B, RoHS Directive 2002/95/EC, WEEE Directive 2002/96/EC		
Supplies	Description	Details	Part Number
	Print Cartridge	Average 7,000 standard pages ¹	106R01370
	Print Cartridge	Average 14,000 standard pages ¹	106R01371
Accessories	64 MB Phaser memory upgrade		097S03759
	128 MB Phaser memory upgrade		097S03760
	256 MB Phaser memory upgrade		097S03761
	Duplex Module	Adds automatic two-sided printing	097S03756
	500-sheet feeder	Add up to three additional paper trays	097N01673
	Wireless Network Adapter	Not available for Phaser 3600B	097S03740
Extended Service Agreements	Annual On-Site Service Agreement		E3600SA
	1 year additional on-site coverage (total of 2 years) ²		E3600S2
	2 years additional on-site coverage (total of 3 years) ²		E3600S3
	3 years additional on-site coverage (total of 4 years) ²		E3600S4

* 3600N and 3600DN

¹ Declared Yield in accordance with ISO/IEC 19752. Yield will vary based on image, area coverage and print mode.

² Available for purchase during first 90 days of ownership.

Section 3: Configurations, Specifications, Supplies, Options, Support and Additional Information Sources

Support and Additional Information Sources

Unrivaled Service and Support

Behind every Xerox product is a large network of customer support that's unrivaled in the industry and available when you need it. Xerox service professionals use leading-edge technologies to keep you up and running. They're even linked to the engineers who designed your product, so you can be confident when you choose Xerox. And Genuine XEROX® supplies are always readily available.

Total Satisfaction Guaranteed — You Decide When You're Satisfied

The exclusive Xerox Total Satisfaction Guarantee, recognized as unique in the industry, covers every Phaser device that has been continuously maintained by Xerox or its authorized representatives under a Xerox express warranty or Xerox maintenance agreement. You decide when you're satisfied.

Xerox Office Services Support

Asset Management Services

- Asset Optimization and Tracking — Process and tools to optimize an enterprise's office output infrastructure and reduce overall costs
- Break-Fix Management — Single point of ownership and management for break-fix service for all brands of office output devices
- Supplies Management — Process and tools to procure, monitor and replenish all document-related supplies proactively

Imaging and Output Management Services

- Output Management — Single point of management of office output from all output devices, regardless of manufacturer
- Image Capture and Workflow — Cost-efficient solutions for capturing, managing, retrieving and distributing information into digital repositories

Support Services

- Technology Procurement and Deployment — A creative and flexible end-to-end print/computer product acquisition solution that uses a single-point-of-contact model while lowering the total cost of acquisition
- Help Desk Services — A broad range of enterprise services managed through a centralized single point of contact and delivered through an on-site or off-site model
- End User Services — Microsoft software implementation, IT project consulting, and customer education

Access Managed Services

Student and Library Patron Access — Custom designed and implemented customer-managed solutions for student and library patron print access management

Additional Information Sources

What's in the box

- Phaser 3600 printer
- Print cartridge (7,000 print capacity)
- World kit (includes Software and documentation CD, Warranty booklet)
- Power Cord
- USB Cable

Phaser 3600 Front Panel

The front panel offers tools and information pages to help with machine setup, feature selections, operational problems, media feed and supply issues.

On the Web

Visit www.xerox.com/office for:

- Product, supplies and support information
- Downloading drivers
- Finding your local Xerox sales representative
- Online documentation

Visit www.xerox.com/office/support for:

Support and service information, including the same troubleshooting Knowledge Base used by Xerox Customer Support staff to provide the latest technical information on:

- Application issues
- Errors
- Print-quality issues
- Troubleshooting

Notes

Notes

Questions? Comments? Problems?

If you have any questions, please contact your Xerox sales representative, call **1-877-362-6567**, or visit us on the web at **www.xerox.com/office**.

