

XEROX®

Phaser® 3500

Technology | Document Management | Consulting Services

black-and-white laser printer

Network **Printing Power**
for your **growing business**



Phaser® 3500 Laser Printer



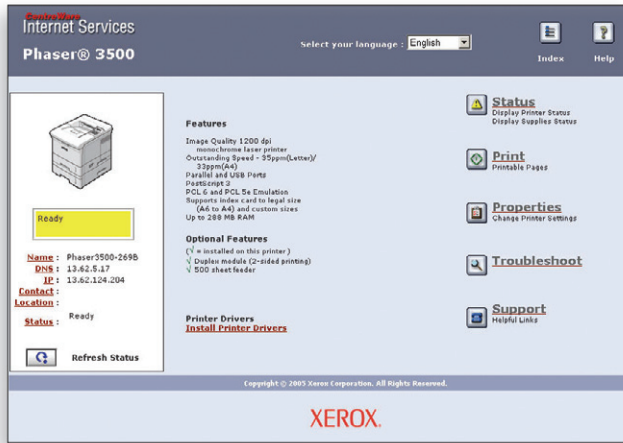
Workgroup-ready Xerox performance, priced for the small office

The Xerox Phaser® 3500 printer provides an affordable solution to meet the increasing volume and speed needed by fast-moving businesses on a budget.

Easy to use right out of the box

The easy-to-use Phaser 3500 printer offers the power and configurations to meet the needs of just about any size workgroup right away.

- Plug and print. With USB and parallel ports, plus 10/100Base-TX Ethernet on the 3500N and 3500DN, you can easily connect one user or many.
- Smart tools. Xerox advanced CentreWare software and updated print drivers simplify printer installation and administration.
- More power. A robust 400 MHz processor quickly takes care of even complicated print jobs, including scanned images and complex charts.
- Faster speed. Printing speed up to 35 ppm puts the Phaser 3500 – and your business – at the front of the pack.
- Class-leading volume. With a monthly duty cycle of up to 100,000 images, the Phaser 3500 reliably handles the heaviest workgroup printing volumes.



Easily set up, monitor and manage the Phaser 3500 printer from your desktop with Xerox CentreWare® software.

High-level performance at a fraction of the cost

The modestly priced Phaser 3500 provides the type of advanced capabilities typically found only on much larger, more expensive laser printers.

- Affordable quality. 1200 dpi Image Quality delivers crisp, professional results on all your business documents – print after print – at a price that fits even the smallest of office budgets.
- Less waiting. A first-page-out time (FPOT) as fast as 10 seconds keeps offices of any size up to speed with the fast pace of today's business environment.
- Powerful printing. The Phaser 3500 offers a standard 32 MB RAM (expandable to 288 MB), as well as a 4 MB flash memory.
- Adaptable technology. PCL6 and PostScript Level 3 language processing enables precise printing across a variety of applications and platforms.

Versatility to boost workgroup productivity

Powerful features and options streamline your current workflow and provide the ability to upgrade as your printing needs expand.

- Simplified control. Web administration tools built into the network function let you manage, configure and troubleshoot the Phaser 3500 printer from any computer.
- Two-sided printing. Save both time and money thanks to fast two-sided printing, available standard on the 3500DN, or as an option on the 3500B and 3500N.
- High paper input. 600- or 1,100-sheet paper input capacities enable longer print runs with minimal user intervention.
- Added durability. Extended print-engine life, high-volume duty cycle, and increased print-cartridge capacities all combine to reduce overall downtime.

Increased paper handling flexibility

Xerox integrates years of advanced paper handling development into each Phaser printer, enabling your business to seamlessly meet a wide range of printing and media needs.

1 The 100-sheet multipurpose tray handles a variety of paper, from 16 lb. up to 43 lb. card stock (60-176 gsm), including envelopes, labels, business cards and other specialty products.

Fast duplex printing is standard on the Phaser 3500DN, but is also available as an option on the Phaser 3500B and 3500N models.

2 A standard 500-sheet input tray feeds 16 lb. to 28 lb. (60-105 gsm) paper.

3 A second 500-sheet input tray is available, boosting total paper input capacity up to 1,100 sheets.



Phaser 3500 printer shown with optional 500-sheet feeder

Call today. For more information, call **1-877-362-6567** or visit us at **www.xerox.com/office**



CONFIGURATIONS	3500B	3500N	3500DN
Speed	Up to 35 ppm letter / 33 ppm A4		
Duty Cycle	100,000 images / month		
Paper Handling	100-sheet multipurpose tray, 500-sheet tray		
Input	Standard		
Optional	500-sheet feeder		
Output	250-sheets (face down)		
Automatic 2-sided printing	optional		standard
Print	As fast as 10 seconds		
First-page-out time	As fast as 10 seconds		
Maximum resolution	1200 dpi Image Quality		
Processor	400 MHz		
Language support	PostScript Level 3, PCL6, PCL5e		
Connectivity	Bi-directional parallel, USB 2.0	Bi-directional parallel, USB 2.0, 10/100Base-TX Ethernet	
Memory (Std / Max)	32 MB + 4 MB Flash ROM / 288 MB RAM		
Print features	Watermark, N-Up Printing, Booklet Printing, Poster printing, Separation Pages, Cover Sheets, Auto Tray Select		
		Embedded Web Server, Status Monitor	
Warranty	One year depot, Xerox Total Satisfaction Guarantee		

SUPPLIES

Consumables	
Standard-Capacity Print Cartridge (average yield 6,000 standard pages)	106R01148
High-Capacity Print Cartridge (average yield 12,000 standard pages)	106R01149

Print cartridge yields: Declared yield values in accordance with ISO / IEC 19752

Options	
500-sheet Feeder	097S03385
Network Interface Card	097S03386
32 MB Memory	097S03388
64 MB Memory	097S03389
128 MB Memory	097S03390
256 MB Memory	097S03761
Auto 2-sided printing	097S03387

Supplies Recycling Program

Consumables for the Phaser 3500 are part of the Xerox Green World Alliance Supplies Recycling Program. For more information, please visit the Green World Alliance website at www.xerox.com/gwa

ISO Compliant Toner Yields

Print cartridge yields are determined in accordance with ISO/IEC 19752, a standard for testing toner cartridge yields for monochrome laser printers.

SPECIFICATIONS

Network/Software

Printer management CentreWare IS Embedded Web Server, CentreWare Web Administration, Xerox NDPS Gateway

Font capabilities PostScript 3: 136 fonts
PCL: 45 scalable fonts, 1 bitmap font

Printer drivers Windows 2000/XP, Windows Server 2003, Windows 98/Me/NT4.0, Mac OS 9.x, Mac OS X version 10.2 and higher, UNIX (Linux, Solaris), Novell, Xerox Walk-Up™ Printer Driver

Languages PostScript Level 3, PCL6, PCL5e

Paper handling

Maximum input capacity: 1,100 sheets

Tray 1/Multipurpose Tray standard: 100 sheets paper, 50 transparencies, 25 labels or 10 envelopes; 16 lb. bond to 65 lb. cover (60-176 gsm), letter, legal, US folio, executive, statement, US postcard, index card, A4, B5-JIS, ISO-B5, A5, A6 postcard, custom sizes from 3 – 8.5 in. (76 – 216 mm) x 5 – 14 in. (127 – 356 mm), and envelopes (monarch, com-10, C5, C6, DL)

Trays 2 standard and Tray 3 optional: 500 sheets paper; 16 lb. bond to 28 lb. light card stock (60-105 gsm), letter, legal, US folio, executive, A4, B5-JIS, ISO-B5, A5

Two-sided printing: 20 lb. to 24 lb. bond (75-90 gsm), letter, legal, US folio, A4

Special features

Convenience features 2-sided printing¹, N-Up, Booklet printing¹, Poster printing, Fit to Page, Mirrored output, Negative Output, Scaling, Watermarks, Cover Page

Print-quality modes Enhanced (1200 dpi Image Quality), Standard (600 x 600 dpi), and Toner Saver mode

Supply Life Indicator Indicators on print cartridges prompt users when supply is low or needs to be replaced

Xerox Installer automatically gets you printing in minutes

Network features:

CentreWare Internet Services Provides remote access to diagnostics and troubleshooting information, and allows users and administrators to monitor printer and supply status

Status Monitor Automatically checks the printer status and sends instant notification to your computer if the printer needs attention

Operating

Dimensions width: 15.6 in. / 396 mm, height: 13.9 in. / 353 mm, depth: 18.6 in. / 472 mm, weight: 38 lb. / 17 kg

Environmental Temperature: Storage: 14° to 104° F (-10° to 40° C), Operating: 50° to 89° F (10° to 32° C), Relative Humidity: Storage: 10% to 85%, Operating: 20% to 80%, Noise Level: Standby: 33 dB(A), Printing: 55 dB(A) (ISO 7779, DIN EN 27779)

Electrical Sleep mode, two models: 100-127 VAC, 50/60 Hz; 200-240 VAC 50/60 Hz

Regulatory FCC Part 15 Subpart B, UL listed to UL 1950, UL Certified to CSA-C22.2 No. 950-M93, FDA 21 CFR Sub J, CE Mark applicable to directives 73/23/EEC and 89/336/EEC, TUV – GS Mark, IEC 950 Second Edition (EN 60950, EN 60825), EU ROHS Directive 2002/95/EC compliance (compliant starting 2006), GOST

Total Satisfaction Services®

1-year depot warranty, online web technical support and telephone support. Innovative service offerings include optional extended Service Agreements and custom training for your Internal Help Desk. The Phaser 3500 printer is backed by the Xerox Total Satisfaction Guarantee.

¹Requires duplex unit

TOTAL
SATISFACTION
SERVICES®

XEROX
TOTAL
SATISFACTION
GUARANTEE

