

Competitive Face-off

Xerox® Phaser® 3320 vs. HP® LaserJet® P2055

The convenient, value-packed Phaser 3320 delivers superior desktop productivity with the latest office technology advantages. Although the HP LaserJet P2055 offers many of the same features, the Phaser 3320 delivers better ease-of-use, superior media flexibility and a wealth of other advantages.

With the Phaser 3320, customers get:

- Excellent value
- Superior media flexibility
- Better performance
- Legendary ease-of-use



Features	Xerox® Phaser 3320	HP LaserJet P2055
Excellent value The Phaser 3320 offers more value, with a higher duty cycle, built-in Wi-Fi, standard duplexing and better media flexibility.	\$399*	P2055d: \$349 P2055dn: \$399
Superior media flexibility The Phaser 3320 better supports diverse workgroups by handling heavy paper and a variety of media media types from the tray, such as cardstock and glossy paper. By contrast, the HP printer lacks heavy-media support from the main tray, so users must rely on the 50-sheet bypass tray	Media Weights: Bypass Tray: 16 lb. bond to 58 lb. cover Tray 1: 16 lb. to 43 lb. bond	Media Weights: Bypass Tray: 16 lb. to 43 lb. bond Tray 1: 16 lb. to 32 lb. bond
Built-in Wi-Fi The Phaser 3320 offers standard internal Wi-Fi connectivity, giving users the freedom to put their device where it's needed most.	Built-in Wi-Fi connectivity	No built-in Wi-Fi – users must purchase an optional Wireless Print Server
Superior print driver The Phaser 3320 print driver is designed for total ease-of-use. It includes Earth Smart settings to reduce paper and toner consumption, and allows fast, easy monitoring of the printer's status.	Earth Smart settings in the print driver automatically reduce paper and toner consumption; and checking printer status is only a click away.	No Earth Smart settings in the print driver and checking printer status requires several more steps as well as opening a web browser.

* Prices are U.S. ERP.

This document is for training purposes only.



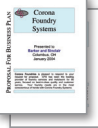
Competitive Face-off

Xerox® Phaser® 3320 vs. HP® LaserJet® P2055

Excellent real-world performance

Although both machines have similar specifications, the Phaser 3320 printer outperforms the HP LaserJet P2055 in real-world office environments.

Product specifications	Xerox® Phaser 3320	HP LaserJet P2055
Print speed (up to)	37 ppm	35 ppm
Processor	600 MHz	600 MHz
Memory (std / max)	128 MB / 384 MB	128 MB / 384 MB
Duty cycle (up to)	80,000 pages / month	50,000 pages / month
Paper capacity (std)	250 sheets	250 sheets

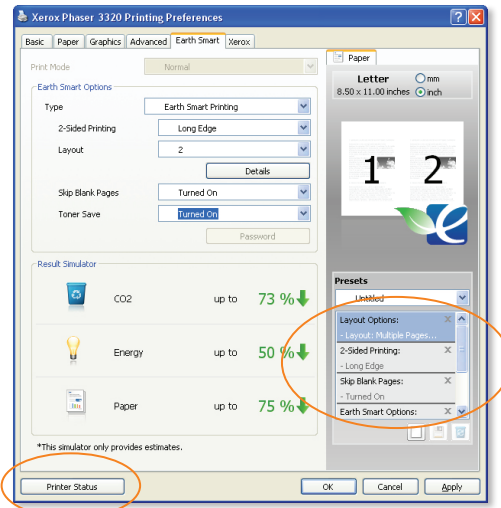
Real-world performance*	Xerox® Phaser 3320	HP LaserJet P2055
 1-page graphic PDF file	11 seconds	17 seconds
 1-page MS Word file	7 seconds	8 seconds
 24-page PDF file	45 seconds	47 seconds

* Tested using industry standard PageSense performance measuring software

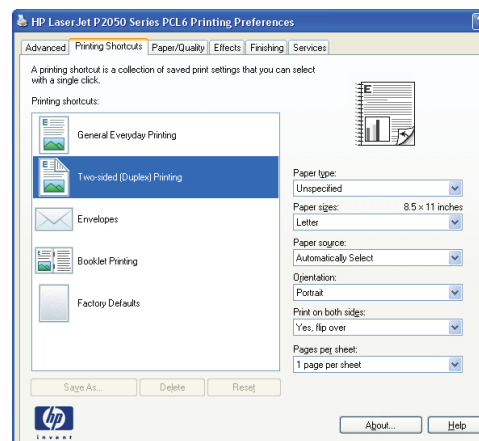
A Smart Driver

The Phaser 3320 print driver makes saving paper and toner as simple as selecting Earth Smart settings. Blank pages are skipped, toner is saved, and all output is printed 2-sided; and if the default settings need to be slightly adjusted, it's easily done on the Earth Smart tab. In addition, users are only one click away from checking the status of their printer, keeping them productive.

The HP LaserJet P2055dn gives users the ability to select duplex printing to cut down on paper usage, but selecting toner save is on a different tab, there's no ability to skip blank pages, and users must know to select the Services tab, then select the appropriate option to get status information...which also opens a web browser (which might be disabled in some environments).



Phaser 3320 Print Driver



HP LaserJet P2055 Print Driver

This document is for training purposes only.

